



Evaluation of Glycine Max Genotypes against *Fusarium solani* Causing Wilt under Natural Sick Field

Manoj Kumar Sahu ^{a*}, K. D. Mahant ^a, Shivam Mishra ^b and B. S. Rajput ^a

^a *Krishi Vigyan Kendra, Raigarh, Indira Gandhi Krishi Vishwavidyalaya, Raipur (CG), Chhattisgarh, India.*

^b *ICAR - ATARI, Zone IX, JNKVV Campus, Adhartal, Jabalpur-482004 (MP), Madhya Pradesh, India.*

Authors' contributions

This work was carried out in collaboration among all authors. All authors read and approved the final manuscript.

Article Information

DOI: 10.9734/IJPSS/2023/v35i214025

Open Peer Review History:

This journal follows the Advanced Open Peer Review policy. Identity of the Reviewers, Editor(s) and additional Reviewers, peer review comments, different versions of the manuscript, comments of the editors, etc are available here: <https://www.sdiarticle5.com/review-history/107205>

Original Research Article

Received: 05/08/2023

Accepted: 12/10/2023

Published: 28/10/2023

ABSTRACT

Soybean wilt (SDS) is very emerging disease in Chhattisgarh and increased losses in soybean production in recent years hence the study was done to identify potential sources of resistance to wilt disease. Hence the research was conducted at College of Agriculture, IGKV, Raipur, Chhattisgarh under natural sick field condition to determine 325 genotypes of soybean [*Glycine max* (L.) Merr.] were screened against *Fusarium solani* f.sp. *glycine* causing wilt. In screening of soybean genotypes, whereas 84 genotypes were highly resistant, 135 were identified as resistant, 35 were recorded as moderately resistant, 33 were susceptible and 38 were highly susceptible to the disease. In this experiment the 13 genotypes (viz. VLS 88, DS 3101, MACS 1454, VLS 89, PK-317, NRC-2007-1-3, NRC-2011-A-3-22, NRC-2011-A-3-6, NRC-2011-A-3-10, AMS-148, Cat-2502, Cat-2722 and EC-685256.) were showed totally highly susceptible as 100 % mortality.

*Corresponding author: E-mail: manoj99.sahu@gmail.com;

Keywords: Soybean; screening; resistant; wilt; *Fusarium solani*.

1. INTRODUCTION

Soybean (*Glycine max* (L.) Merr.) is a legume of the family Fabaceae, sub family Faboideae. Soybean has become a miracle crop of the twentieth century. It is a triple beneficiary crop, a unique food, a valuable feed and an industrial raw material with considerable potential [1] which make it a “wonder crop”. Its seed contains 40% protein, 20% oil, 30% carbohydrates, excellent amounts of dietary fibre, vitamins, minerals and high level of amino acids such as lysine, leucine, lecithin and large amount of phosphorus. Soybean plants build up the soil fertility by fixing large amounts of atmospheric nitrogen through root nodules. In India it occupies an area (*kharif*) of 114.50 lakh ha. with a production of 124.11 mt and productivity of 114.5 kg/ha [2]. Sustainable soybean production is continuously challenged by diseases that cause quantitative and qualitative losses in yield. It's suffered from a number of diseases such as many fungal, bacterial and viral diseases which are responsible for low producing. Among the fungal pathogens, *Fusarium* wilt is very common and important disease of soybean. These pathogens cause significant loss in yield and primarily responsible for wide gap in the yield levels in farmers field [3]. In India root rot of soybean caused by *F. solani* was first reported by Agarwal and Sarbhoy [4]. Foliar symptoms of SDS appear before flowering of late maturing varieties or after flowering in cultivars of early maturing group [5]. The symptoms of wilt of soybean caused by *Fusarium solani* f. sp. *glycine* were observed and infected plants showed wilting at all stages of their growth. At seedling stage, leaves and stems became chlorotic. Further they became necrotic and drooped leading to sudden death of the plant. Early symptoms of SDS, were seen in the uppermost parts, these uppermost leaves became chlorotic that enlarged as the disease became more severe. These patches on the leaves then progressed into necrotic patches.

Following necrosis of the leaflets in the top of the canopy, defoliation of the soybean plants slowly progressed downwards into the canopy. Furthermore a large reduction in root volume was also observed. The decreased root volume reduces the roots' capacity to take up the essential nutrients and water necessary for maximum yield. Plants that exhibited foliar symptoms of SDS also showed greyish to reddish brown internal and external discoloration on the taproot which started near the pith and later moved upwards in the vascular system [6]. Previously scattered and circular to irregular chlorotic spots on leaves, interveinal necrotic, necrosis of taproot and lateral roots leading to reduction in root mass, flower and pod abortion and total defoliation of the plant in severe cases have been found associated with SDS in soybean caused by *F. solanif*.sp. *glycine* [7,8,9].

2. MATERIALS AND METHODS

To find out the source of resistance an experiment was conducted during *kharif* season under wilt sick field conditions in the field of IGKV, Raipur. The experiment was conducted with a randomized block design with three replications. In this trial 325 varieties were grown with recommended agronomic package of practices. In this experiment every one variety is sown randomly in 2 rows and 3 m length along with three replications. The observations were recorded for per cent mortality during pod development stage and the per cent of mortality was calculated by using the following formula after that the percent mortality was grouped in 1 to 9 scales as under:

$$\text{Mortality \%} = \frac{\text{Wilted plants}}{\text{Total plants}} \times 100$$

Table 1. Mortality percentage and reaction

| Disease Scale | Mortality per cent | Reaction |
|---------------|--------------------|----------------------|
| 1 | <1 | Highly Resistant |
| 3 | 1.1-10 | Resistant |
| 5 | 10.1-20 | Moderately Resistant |
| 7 | 20.1-50 | Susceptible |
| 9 | >50 | Highly Susceptible |

3. RESULTS AND DISCUSSION

In the present study, 325 soybean genotypes were screened against *Fusarium* wilt under natural sick field conditions and results are present in Table 2. The mortality per cent of *Fusarium* wilt ranged from 0 per cent to 100 per cent. Only 84 genotypes were found highly resistant for *Fusarium* wilt (*F. solani* f.sp. *glycine*)

disease, whereas 135 genotypes were identified as resistant, 35 genotypes were recorded moderately resistant/tolerant, 33 genotypes were susceptible and 38 were highly susceptible to the disease. In this experiment the 13 genotypes were showed totally 100% wilted viz. VLS 88, DS 3101, MACS 1454, VLS 89, PK-317, NRC-2007-1-3, NRC-2011-A-3-22, NRC-2011-A-3-6, NRC-2011-A-3-10,

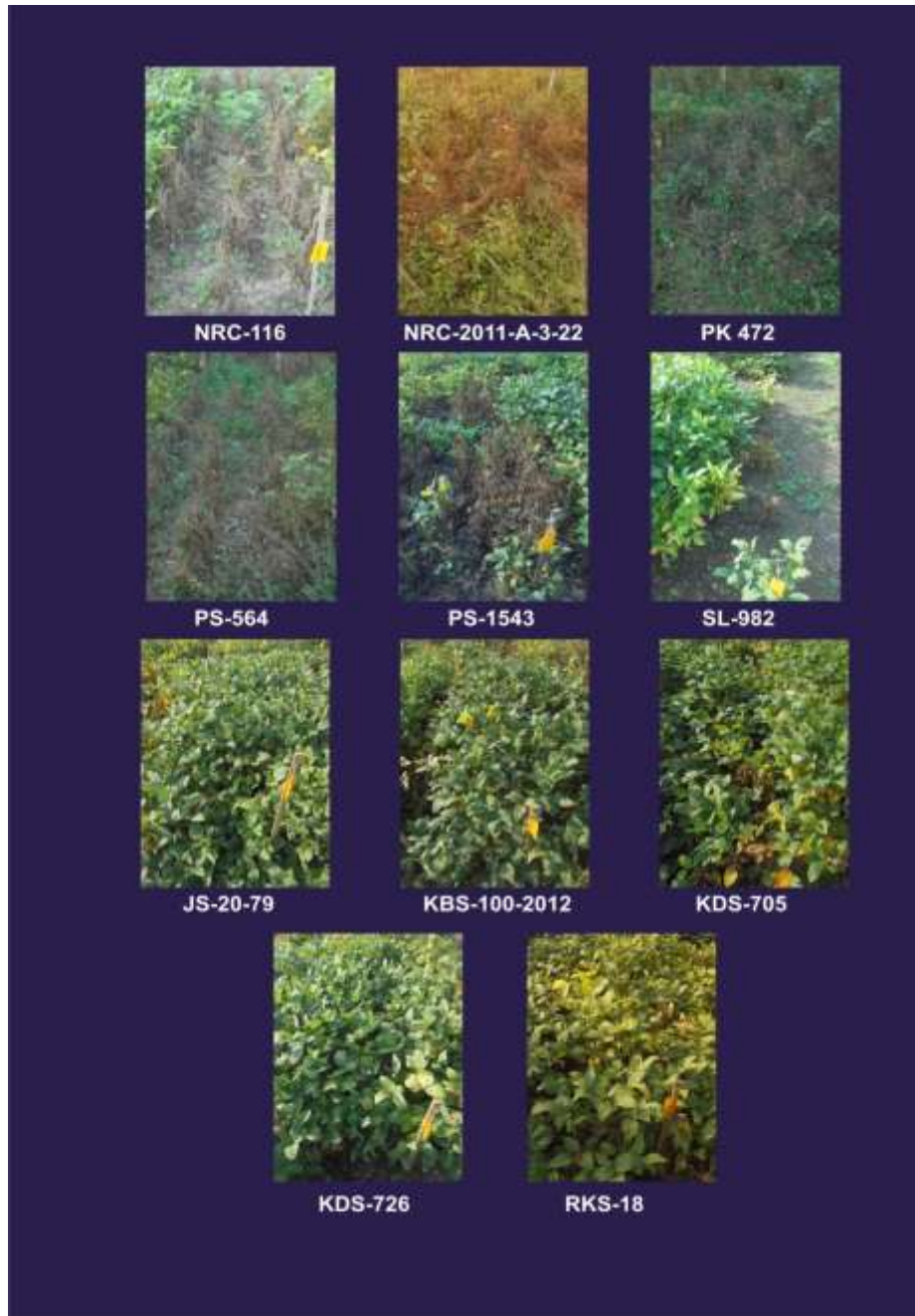


Fig. 1. The genotypic mortality variation of soybean

AMS-148, Cat-2502, Cat-2722 and EC-685256. Muller et al. [10] were screened 2000 different cultivars against sudden death syndrome in soybean and found less than 2 % of those cultivars were moderately resistant, when compared to moderately resistant cultivar PI 520733. Klingel fusset al. [11] observed the reaction of 8 soybean cultivars against sudden death syndrome (SDS). They found in genotypes PI 567734, PI 520733 MGBR 46 were the most resistant to SDS with AP% of 30.79, 31.30 and 35.34 per cent respectively. Muller et al. [11]

identified 57 PIs as being moderately resistant to SDS and appropriate to use as source of resistant to increase the level of resistant of cultivars in the United states. Patel et al. [13] reported out of sixty one promising lines tested for two years, genotypes GAUT-82- 9 and GAUT-82-74 were free from *F. oxysporum* f. sp. *udum* infection. While GAUT-82-23 were completely free from *F. oxysporum* f. sp. *udum* infection. Ahmad et al. [14] reported considerable variation among the 321 chickpea genotypes against *F. oxysporum*.

Table 2. Level of resistance/susceptibility of soybean germplasm/genotypes against *Fusarium* wilt

| Disease Reaction | No. of Entries | Name of entries |
|----------------------|----------------|---|
| Highly Resistant | 84 | NRC 99, RSC 10-15, JS 20-96, JS 93-05, RVS 2007-6, JS 20-98, RSC 10-46, RVS2008-24, MAUS 706, MACS 1460, KDS 753, JS 20-87, JS-20 -53, RVS-2002-19, JS-20-89, KBS-100-2012, BAUS-96, MACS-1370, 9752, BRAGG, SL-599, JS-97, JS/SH/96-31, B-458, EC-389392, JS-82-180, MAUS-144, MAUS-754, MAUS-145, RAUS-5, H6P20, NRC-95-02-03, NRC-96-03-02, NRC-2006-4-13, NRC-2006-l-1, NRC-2007-L-1-5, GP 101, GP 103, GP 107, NRC-2008-D-5-3, NRC-2008-B-3-21-1, NRC-2008-G-1-8-2, NRC-2008-B-2-6-2, NRC-2007-A-2-3, NRC-2008-G-2-6 ,NRC-2008-J-8-1-1, NRC-2011-F-1-23, NRC-2011-F-1-15, NRC-2011-A-3-8, NRC-2012-B-6-3-1-4-3, NRC-2012-M-127-2-3, NRC-2012-l-1-6, NRC-2012-12-1-9, VS-2004-114, VS-2004-18, VS-2004-13, VLS-2, VS-2005-12, VS-2005-23, H4P13, H5P4, H5P3, NRC-95-06-03, NRC-95-03-02, NRC-95-08-01, H3P8, H3P23, Delhi-19, Delhi-20, Delhi-21, Cat-3299, EC-34078, JS-20-35, JS-20-42, JS-20-47, JS-20-55, JS-20-59, JS-20-72, JS-20-78, JS-20-81, MAUS-14-2, MAUS-703, PI-283327, PRAB-1 |
| Resistant | 135 | KBS 23-2014, JS 97-52, MACS 1442, PS 1550, KDS 869, NRC 116, KDS-726, SL-955, JS-20-79, RVS-2002-4, RKS-18, BIRSA SOYA-1, PK-10-24, JS-415, JS-15-14, PB-1, EC-38971, EC- 391167, TS-99-76, PS-564, PS10-92, Seelajit , PK-416, PK-12-41, PK-515, HIMSO-15-36, KB-165, TS-128-5, TS-148, MACS-756, DS-98-14, PK-13-14, MACS-798, DS-228, MACS-693, PK-12-25, PK-327, PK-262, JS-16-40, MMSS-36, EC-34117, JS-90-41, SL-517,B-S-97-12, JS-18-13, HIMSO-15-21, MAUS-71, MAUS-61-2, JS-93-05, JS-97-52, H5P8, NRC-95-05-03, NRC-2006-4-1-2, NRC-2006-C-7, NRC-2006-F-2-2, NRC-2007-J-3, NRC-2007-A-3-1, NRC-2006-M-6, NRC-2007-B-1-19, NRC-2007-B-2-4, NRC-2007-4-1-36, NRC-2007-C-1-5, NRC-2007-12-7-2, GP102, GP 104, GP 105, GP 106, GP 108, GP 109, GP 110, GP111, GP 112, GP113, GP 114, NRC- 2008-G-1-12 NRC-2008-B-3-17, NRC-2008-F-1, NRC-2008-B-1-9-1, NRC-2008-B-2-2-2, NRC-2011-C-5-5, NRC-2011-B-1-8-1-43, NRC-2011-H-4-10, NRC-2011-G-3-13, NRC-2011-E-2-1-9-1, JSM-117-4, NRC-2011-C-4-12, NRC-2012-M-127-1, NRC-2012-F-1-18-3, NRC-20-G-1-2-2-5, NRC-2012-J-2-2-1, NRC-2011-A-3-7, NRC-2011-C-N-11, VS-2002-9, VS-2004-9, VS-2173, VS-2005-19, VS-2005-21, VS-2005-22, VS-2005-28, VS-2005-37, NRC-95-03-03, NRC-95-12-01, NRC-96-02-02, NRC-95-03-01, NRC-96-05-03, NRC-95-10-03, H6P21, Delhi-3, Delhi-8, Delhi-9, Delhi-14, Delhi-17, Delhi-22, Delhi-23, Delhi-25, Delhi-26, AMS-39-2-1, AMS-50-B, Cat-1368, Cat-2388, EC-2581, EC-15966, EC-39491, EC-107416, EC-118443, EC-457161, EC-685255, GP-393, GP-448, Himso-175, JS-20-74, JS-20-76, JS-20-83, JSM-224, JSM-227 |
| Moderately resistant | 35 | PK-1024, NRC-56, SL-518, NRC-57, JS-98-21, EC-391181, NRC-37, H3P12, NRC-2007-G-1-15, NRC-2011-E-4-11-1-1, NRC-2011-E-2-5-12-1, NRC-2012-M-127-3, VS-2157, Delhi-1, Delhi-2, Delhi-4, Delhi-7, Delhi-15, Delhi-24, MS-115, AMS-MB-5-18, Cat-1113, EC-232019, EC-389148, EC-391336, EC-685250, JSM-258, |
| Susceptible | 33 | DSB 24 ,RVS 2008-8 PS 1552, AMS 1003, AMS 1004, PS 1556, DSB-25, KDS-743, JS-335, DS-2705, MACS-1407, NRC-93,RKS-113,KDS-705, JS-20-69, JS-20-71, NRC-94, MAUS-612, MACS-58, NRC-2, JS-79-263, NRC-2006-A-4-12, NRC-2006-J-7, NRC-2006-A-23, NRC-2008-F-6, NRC-2011-E-2-1-7, VS-495, Delhi-11, Delhi-12, Delhi-13, Delhi-16, Delhi-18, EC-685243 |
| Highly susceptible | 38 | SL 1028, VLS 88, DS 3101, MACS 1454, NRC 100, DSb 28-3 DS 3102, VLS 89, MACS-1410, PS-1543, HIMSO-1685, DSB-23-2, SL-982, KBS-22-2009, MACS-1416, IS-9, PK-472, JS-80-54, JS-92-14, PK-317, MACS-694, MACS-124, JS/SH/94-21, NRC-2007-1-3, NRC-2011-A-3-22, NRC-2011-A-3-6, NRC-2011-A-3-10, VS-2004-19, VLS-47, Delhi-5, Delhi-6, Delhi-10, AMS-148, Cat-2502, Cat-2722, EC-100027, EC-685256, MAUS-41, |
| Total LSI | | 325 3.81 |

4. CONCLUSION

The pathogen is primarily a soil inhabitant; hence controlling the disease is very difficult through chemical approaches as well as fungicides are very less effective. The development of resistant varieties is considered as more practicable. Therefore to identify resistant genotypes to manage the disease some soybean genotypes were evaluated against the wilt caused by the *Fusarium solani*.

COMPETING INTERESTS

Authors have declared that no competing interests exist.

REFERENCES

1. Chavan NG, Bhujbal GB, Manjare MR. Effect of seed priming on field performance and seed yield of soybean varieties. The Bioscan. 2014;9(1):111-114.
2. Anonymous. Estimates of area, productivity and production of soybean in India during *kharif*. SOPA. 2022;1-4.
3. Zape AS, Gade RM, Singh R, Deshmukh VA. Efficacy of different antagonist against the *Sclerotium rolfsii*, *Rhizoctonia asolani* and *Fusarium solani*. The Bioscan. 2014; 9(4):1431-1434.
4. Agarwal DK, Sarbhoy AK. Nectria haematocoa, a perfect state of *Fusarium solani* (Mart.) Sacc.on soybean from India. Curr.Sci. 1975;44:602.
5. Verma KP, Dantre RK, Thakur MP. Effect of date of sowing on incidence of Colletotrichum pod blight, rust, fusarial wilt and target leaf spot of soybean. Ann. Pl. Protec. Sci. 2009;17(1):133–135.
6. Navi SS, Yang XB. Foliar symptom expression in association with early infection and xylem colonization by *Fusarium virguliforme* (formerly *F. solani* f. sp. *glycines*), the causal agent of soybean sudden death syndrome. Online. Plant Health Progress; 2008. DOI:10.1094/PHP-2008-0222-01-RS.
7. Roy KW, Rupe JC, Hershman DE, Abney TS.. Sudden death syndrome of soybean. Plant Dis. 1997;81:1100-1111.
8. Hartman GL, Sinclair JB, Rupe JC. Compendium of soybean diseases. Soybean Disease Compendium; Agricultural Research Service: Washington, DC, USA. 1999;37-9.
9. Scherm H, Yang XB, Lundeen P. Soil variables associated with sudden death syndrome in soybean fields in Iowa. Plant Disease. 1998 Oct;82(10):1152-7.
10. Mueller DS, Nelson RL, Harman GL, Pedersen WL. Response of commercially developed soybean cultivars and the ancestral soybean lines to *Fusarium solani* f. sp. *glycines*. Plant Dis. 2003;87: 827-831.
11. Klingelfuss LH, Yorinori JT, Arias CAA, Destro D. Reaction of soybean cultivars to sudden death syndrome and disease scoring methods for screening resistance. Crop Breeding and App. Biotech. 2002; 2(2):257-264.
12. Mueller DS, Hartman GL, Nelson RL, Pedersen WL. Evaluation of *Glycine max* germplasm for resistance to *Fusarium solani* f. sp. *glycines*. Plant Dis. 2002; 86:741-746.
13. Patel JA, Nafole SD, Patel DB, Zaeri PP, Phatak AR. Field screening of pigeon pea lines for resistance to wilt at Vadodara, Gujarat, India. International Pigeon pea Newsletter. 1988;7:26.
14. Ahmad MA, Iqbal SM, Ayub N, Ahmad Y, Akram A. Identification of resistant sources in chickpea against *Fusarium* wilt. Pak. J. Bot. 2010;42(1):417-426.

© 2023 Sahu et al.; This is an Open Access article distributed under the terms of the Creative Commons Attribution License (<http://creativecommons.org/licenses/by/4.0>), which permits unrestricted use, distribution, and reproduction in any medium, provided the original work is properly cited.

Peer-review history:

The peer review history for this paper can be accessed here:
<https://www.sdiarticle5.com/review-history/107205>