

## Diagnostic Significance of Beclin-1 and Transforming Growth Factor $\beta$ in Breast Cancer

Shereen Saeid Mahmoud Elshaer<sup>1</sup>, Laila Ahmed Rashed<sup>2</sup>  
and Mona Mohammed Abdel Hamid<sup>1\*</sup>

<sup>1</sup>Department of Biochemistry, Faculty of Pharmacy (Girls), Al-Azhar University, Cairo, Egypt.

<sup>2</sup>Department of Medical Biochemistry, Faculty of Medicine, Cairo University, Egypt.

### Authors' contributions

*This work was carried out in collaboration between all authors. Author LAR designed the study. Authors SSME and MMAH performed the statistical analysis, wrote the protocol and wrote the first draft of the manuscript. Authors LAR and MMAH managed the analyses of the study. Authors MMAH and SSME managed the literature searches. All authors read and approved the final manuscript.*

### Article Information

DOI: 10.9734/JCTI/2019/v9i130099

#### Editor(s):

- (1) Dr. Bing Yan, Department of Oncology, Hainan Branch of PLA General Hospital, China.
- (2) Dr. Sri Lakshmi Hyndavi Yeruva, Department of Internal Medicine, Division of Hematology/Oncology, Howard University Hospital, Washington, DC, USA.

#### Reviewers:

- (1) Michael Bordonaro, Geisinger Commonwealth School of Medicine, USA.
  - (2) Maria Cristina de Melo, University Federal do Rio de Janeiro, Brazil.
  - (3) Adamu Ahmad Rufa'l, University of Maiduguri, Nigeria.
  - (4) Eleonore Fröhlich, Medical University of Graz, Austria.
- Complete Peer review History: <http://www.sdiarticle3.com/review-history/48202>

Original Research Article

Received 16 January 2019  
Accepted 03 April 2019  
Published 11 April 2019

### ABSTRACT

**Background:** The main cause of cancer deaths amongst women breast cancer remains a clinical and social challenge, and a serious public health problem. On a worldwide level, it continues to be a devastating disorder. BECN1 is a tumor suppressor gene implicated in the initiation of autophagy. It encodes beclin-1 protein that inhibits cancer growth. There is wide disputation concerning its role in initiation, promotion of tumor and predictive importance of autophagic molecules. Transforming growth factor  $\beta$  (TGF- $\beta$ ) induces process of epithelial-mesenchymal transition (EMT) keeping, epithelial cells more motile and invasive resulting in cancer progression and metastasis.

**Aim:** Detection of beclin-1 expression level in metastatic and non-metastatic breast cancer patients and study its role in tumorigenesis of breast cancer through attainable association with the inflammatory cytokine, TGF- $\beta$ .

\*Corresponding author: Email: monamohamed20489@gmail.com;

**Methods:** Expression levels of beclin-1 and TGF- $\beta$  were assessed in 70 breast cancer female patients and 20 controls using quantitative real-time PCR.

**Results:** Beclin-1 expression levels as well as TGF- $\beta$  were significantly higher in metastatic breast cancer patients and non-metastatic patients compared to controls. Positive correlation was found between beclin-1 expression level and TGF- $\beta$  expression level in breast cancer patients.

**Conclusion:** Our results indicated that over-expression of both beclin-1 and TGF- $\beta$  was associated with aggressive clinical outcomes of breast cancer patients and tumor growth. These findings suggest that beclin-1 and TGF- $\beta$  are associated with tumorigenesis of breast cancer.

*Keywords:* Autophagy; BECN1; TGF- $\beta$ ; breast cancer.

## 1. INTRODUCTION

Breast carcinoma is the main cancer that influences females accounting for 37.7% of their overall malignancies in Egypt. Moreover, it is important reason of cancer related mortality in Egypt, constituting about 29.1% of all most cancer associated mortality [1]. Autophagy is a cellular degradation or "self-eating" pathway extremely preserved throughout all existence kingdoms. [2]. Considering the truth that autophagy is implicated in numerous cellular process, and keeping in mind the complexity of the molecular mechanisms of tumor initiation and development, it is no longer shocking that the interruption of autophagy plays role in tumor initiation and progression. Indeed, cancer was the primary disease allied with disturbed autophagy besides, the first for which medical trials in humans were performed [3].

Beclin-1 (BECN1) is a rate-limiting element of autophagy and a haplosufficient cancer suppressor that is fundamental for embryonic development. Moreover, this protein is a core factor essential for autophagosome formation [4]. Transforming growth factor-beta (TGF- $\beta$ ) is a protein that is essential regulator in homeostasis in various organs [5]. (As a signaling molecule, TGF- $\beta$  has a variety of biological function and participates in several physiological and pathological processes [6].

## 2. MATERIALS AND METHODS

### 2.1 Ethical Approval

The study was approved by the Institutional Review Board (IRB) of the NCI, Cairo University and was conducted according to the rules of Helsinki declaration for human studies. A Written informed consent was obtained from all study subjects.

### 2.2 Subjects

The study included 70 Egyptian women with breast cancer at distinctive stages, their age ranged from (23-76 years). They were collected from Kasr Alainy hospital. Patients were diagnosed by clinical examination and affirmed by mammography and surgical biopsies. Twenty clinically normal adjoining specimens were moreover collected from adjacent healthy breast tissue of non-metastatic breast cancer cases. All specimens were subjected to estimation of expression levels of beclin-1 and TGF- $\beta$  in breast tissue.

The studied subjects were separated into three groups as follows:

- Group I: (n=26) metastatic breast cancer female patients with distant metastasis (bone, liver, and lung).
- Group II: (n=44) non-metastatic breast cancer female patients.
- Group III: (n=20) healthy adjacent normal tissues of non-metastatic breast cancer cases as a control group.

### 2.3 Tissue Sampling and RT PCR Analysis

Total RNA was extracted from breast tissues using Qiagen tissue extraction kit (Qiagen, USA) according to instructions of manufacture. The first strand cDNA was derived from total RNA (0.5  $\mu$ g) and oligo (dT) using the Reverse Transcription System (The QuantiTect Reverse Transcription Kit). For real-time quantitative RT-PCR, gene specific primers listed in (Table 1) and QuantiTect SYBR Green PCR Kit were used. GAPDH was used to normalize the quantity of specific mRNA. The amplification efficiency determined for both target and housekeeping genes was equal. Relative expression levels were calculated by the  $2^{-\Delta\Delta Ct}$  method.

**Table 1. List of primers sequences applied in real time-PCR**

Genes	Forward primer	Reverse primer
GAPDH	CAATGACCCCTTCATTGACC	TTGATTTGGAGGGATCTCG
Beclin-1	GGCTGAGAGACTGGATCGG	CTGCGTCTGGGCATAACG
TGF-β	ACATTGACTTCCGCAAGCAC	GTCCAGGCTCCAAATGTAGG

**2.4 Statistical Analysis**

Statistical analysis of data was performed by Sigma Plot version 12.5 and Graphpad Prism 5. Data were illustrated as mean ± standard deviation. Differences among groups were analyzed by Shapiro-Wilk test. Post-hoc testing was performed by the Tukey test to compare the difference among the groups. Simple linear correlation (Pearson correlation coefficient test) (r) was also done to test for linear relations between beclin-1 and TGF-β with other variables. P-value is considered significant if < 0.05. Receiver operating characteristics curves (ROC curves) were utilized to assess the diagnostic performance of the studied parameters.

**3. RESULTS**

**3.1 Expression Levels of Beclin-1 and TGF-β in Different Clinicopathological Factors in Patients with Breast Cancer**

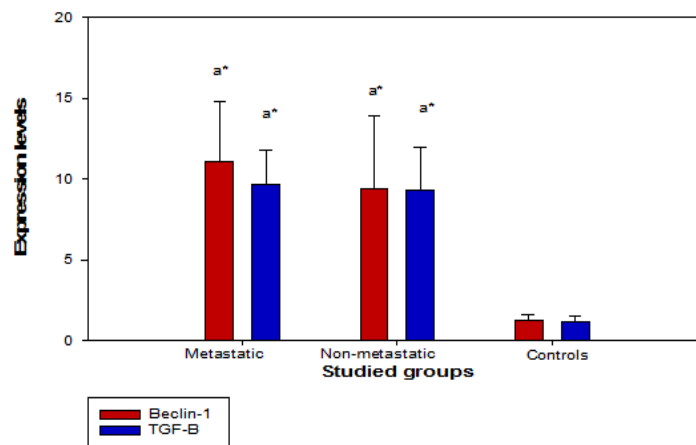
The associations between the levels of beclin-1 and TGF-β with clinicopathological factors were analyzed. The levels of beclin-1 and TGF-β were increased higher TNM stage (p< 0.01) but showed no significant correlation with the other factors (Table 2).

**3.2 Expression Levels of Beclin-1 and TGF-β in Patients with Breast Cancer Compared to Control Group**

Expression Level of beclin-1 was highly significant in metastatic malignant group (11±3.6) and non-metastatic malignant group (9.3±4.5) compared to the control group (1.2±.34) with (p value <0.05), as well as expression Level of TGF-β was highly significant in metastatic malignant group (9.5±7.9) and non-metastatic malignant group (9.3±7.7) compared to the control group (1.1±30) with (p value <0.05) (Fig. 1).

**3.3 Receiver Operating Characteristics (ROC) Curves**

Receiver operating characteristic curves were carried out to assess the diagnostic performance of beclin-1 and TGF-β and their sensitivity and specificity independently or in combination. The best cut-off value for beclin-1 in malignant patients was >1.9 (P <0.0001) with 95% sensitivity and 98.5% specificity producing area under the curve (AUC) 0.997 (Fig. 2). For tissue expression of TGF-β in malignant patients; the best cut-off point was >3.98 (P <0.001) with 100% sensitivity and 98.5% specificity producing



**Fig. 1. Mean ± SD of beclin-1 and TGF-β expression levels for the studied groups**  
*a\* significant from controls*

**Table 2. Correlation between expression levels of beclin-1 and TGF-β with clinicopathological factors in the malignant groups**

Clinicopathological Factors	Malignant patients (70)	Beclin-1 P value	TGF-β P value
Metastasis	26 (37.1%)	>0.05	>0.05
Metastatic	44 (62.9%)		
Non-metastatic			
Family history	54 (77.1%)	>0.05	>0.05
No family history	16 (22.9%)		
Family history			
Menopause	47 (67.1%)	0.05>	0.05>
Pre-menopause	23 (32.9%)		
Post-menopause			
Site		>0.05	>0.05
Right	35 (50%)		
Left	32 (45.7%)		
Bilateral	3 (4.3%)		
Pathology		>0.05	>0.05
IDC II	58 (82.8%)		
Medullary	1 (1.4%)		
IDC III	6 (8.6%)		
IDC + ILC	3 (4.3%)		
ILC	2 (2.9 %)		
ER sensitivity		>0.05	>0.05
Positive	49 (70%)		
Negative	21 (30%)		
PR sensitivity		>0.05	>0.05
Positive	42 (60%)		
Negative	28 (40%)		
HER sensitivity		>0.05	>0.05
Positive	29 (41.4%)		
Negative	41 (58.6%)		
Molecular diagnosis		>0.05	>0.05
HER 2 enriched	29 (41.4%)		
Triple negative	11 (15.7%)		
Luminal B	26 (37.15%)		
Luminal A	4 (5.75%)		
Stage		<0.05**	<0.05**
Stage II	18 (25.7%)		
Stage III	26 (37.15%)		
Stage IV	26 (37.15%)		

a\* significant from stage II, ER: estrogen receptor, PR: progesterone receptor, HER2: human epidermal growth factor receptor 2

AUC=1 (Fig. 3). On the other hand, the best cut-off points for both beclin-1 and TGF-β in combination was >1.9 ( $P < 0.001$ ) with 97.5 % sensitivity and 99.2 % specificity and AUC= 0.99 (Fig. 4).

### 3.4 Pearson’s Correlation Analysis

There was a significant positive association between expression level of beclin-1 in breast

cancer patients and TGF-β ( $r = 0.241$  and  $P < 0.05$ ) (Fig. 5).

### 4. DISSCUSSION

Autophagy is utilized by ordinary and cancer cells. However, the mechanism of autophagy in different cancers including breast cancer remains not clear in oncogenic/protumorigenic and tumor-suppressor feature [7]. The purpose of our study was to assess expression levels of beclin-1 and

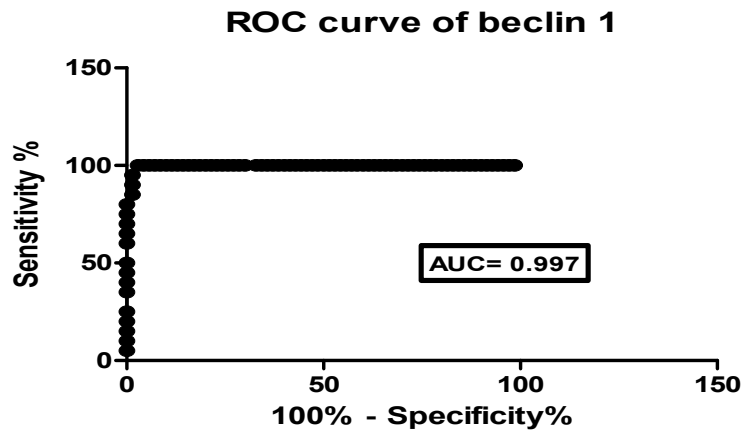


Fig. 2. ROC curve of beclin-1

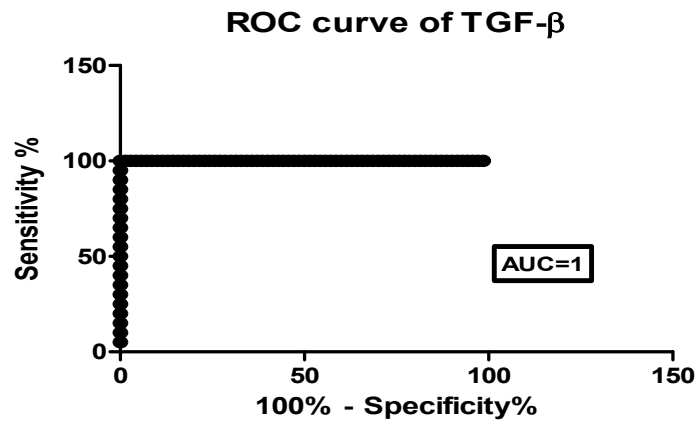


Fig. 3. ROC curve of TGF- $\beta$

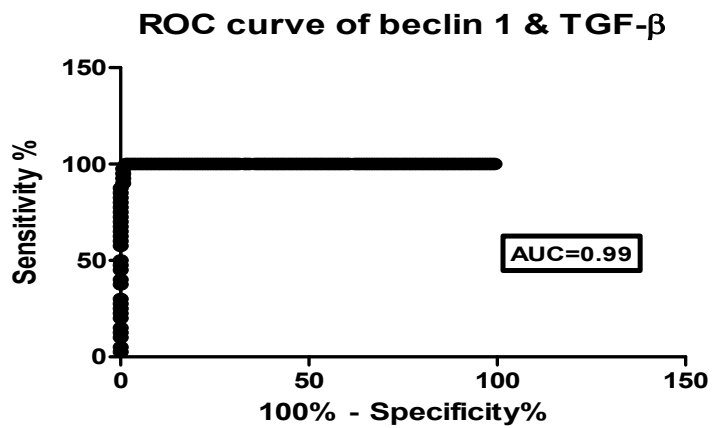
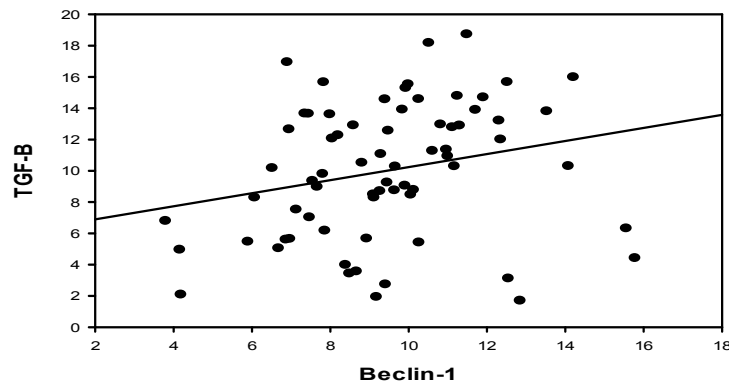


Fig. 4. ROC curve of beclin1 and TGF- $\beta$



**Fig. 5. Correlation between beclin-1 and TGF-β expression levels**

TGF-β in breast carcinoma Egyptian women compared to normal controls and to determine the potential value of beclin-1 and TGF-β as molecular biomarkers for diagnosis of breast cancer in Egyptian women. We found, compared to the expression in normal breast tissue, that beclin-1 and TGF-β were over-expressed in tumor tissue. Moreover, the over-expression of beclin-1 and TGF-β in breast cancer was considerably associated with higher TNM stage. These findings may suggest that beclin-1 and TGF-β have direct influence on development and progression of breast carcinoma. In the current study, beclin-1 level was significantly increased in breast cancer groups in comparison to healthy subjects (P value < 0.01). Our results are supported with different previous studies presented by Hamurcu, et al., [8] who have studied the relative concentrations of beclin-1 in the tissue of patients with breast cancer, metastatic disease and healthy women and stated that expression levels of beclin-1 was higher in highly aggressive, metastatic and noninvasive cancer cells compared to non-tumorigenic normal human breast cells. The role of autophagy was studied and reported in various solid cancers including breast cancer [8]. In another study Wang, et al., [9] founded a significant increase of beclin-1 expression in eighteen breast carcinoma patients which was associated with tumor progression. Also, Park, et al., [10] revealed that the expression of beclin-1 was increased in tumor cells relative to normal-appearing and adjacent colonic mucosa in all cases. Similarly, Chen, et al., [11] reported an increased expression of beclin-1 in tumor tissue compared with under-expression in normal

gallbladder specimen ( $p < 0.05$ ). The concept that autophagy represents a mechanism that promotes tumor growth is based on the need of tumor cells to adjust to ischemia in the surroundings that are hypoxic, besides growth factors and supplemental deprivation. Consistent with this aspect, autophagy is activated in hypoxic environment of tumors [12]. Beclin-1 was firstly found to have tumor suppressor role. However, elevated expression of beclin-1 was related with cancer progression in some carcinoma [13]. In contrast to our study, decreased beclin-1 expression was observed in seventy percent of the breast tumors, and the protein levels were co-related to the mRNA levels [14]. However, Claude-Taupin, et al., [15] reported that no major difference in beclin-1 mRNA expression between tumor and healthy adjacent tissues. The current study revealed that TGF-β was significantly increased in breast carcinoma patients compared to control group (P value < 0.001) and this finding is affirmed by Ciftci, et al., [16] who have studied the expression level of TGF-β and established that the mean serum TGF-β level of breast cancer patients was considerably higher than controls. There was no considerable difference according to known disease-related clinicopathological parameters. Our finding is supported by El-Aziz et al., [17] who revealed that the level of TGF-β was considerably higher in malignant groups than normal control group with p value (<0.0001). The results of the present study was supported by Scherer et al., [18] who detected the level of TGF-β in breast cancer patients; he found that its level was increased. In the current study, ROC curve of beclin-1 showed

95% sensitivity and 98.5% specificity and this is supported by Harb, et al., [19] who reported that the sensitivity of beclin-1 as a predictor for advanced stage of IDC was 85.5% and the specificity was 98.5%. Also, ROC curve of TGF- $\beta$  showed 100% sensitivity and 98.5% specificity and this is supported by El Husseini, et al., [20] who reported that 98.2% sensitivity and 100% specificity demonstrating the diagnostic power of this studied marker in differentiating between breast cancer patients and controls. TGF- $\beta$  is connected with expanded cancer progression, higher cell movement, cancer invasiveness, and metastasis. Furthermore, it is included in cancer surrounding medium alteration and advancement of migration and invasiveness [21]. TGF- $\beta$  elevated the mRNA levels of beclin-1, and other protein kinase implicated in death process. Moreover, TGF- $\beta$  evoked autophagy in some mammary carcinoma cell. These findings illustrate that TGF- $\beta$  signaling pathway activates autophagy in certain human cancer cells and that induction of autophagy is a novel aspect of biological role of TGF- $\beta$  [22]. Concerning clinicopathological factors, the over-expression of beclin-1 was considerably related with TNM stage ( $p < 0.05$ ) but it showed no noteworthy association with the other factors. The current results were similar to Chen, et al., [12] work who declared that over expression of beclin-1 was essentially related with TNM stage but had no vital relationship with age, sex, lymphatic metastasis, or tumor differentiation. Also, the affiliation between hormonal status and TGF- $\beta$  expression was examined for both Estrogen receptors (ER) and Progesterone receptors (PR) by El-Aziz, et al., [17] concluding that no noteworthy difference of TGF- $\beta$  expression neither between ER positive versus ER negative tumors, nor between PR positive and PR negative tumors and this is similar to our data. Concerning the relation between tissue tumor subtypes and TGF- $\beta$  level, El-Aziz et al., [17] reported no critical difference between TGF- $\beta$  level and tissue tumor subtypes as we found.

## 5. CONCLUSION

This study affirmed overexpression of beclin-1 in breast carcinoma tissues and demonstrated that beclin-1 and TGF- $\beta$  high expression levels were associated with forceful clinical outcomes of breast cancer patients. Also, their overexpression contributed to the tumor development. The present study has a limitation: the sample size was relatively small. Consequently, the present study should be done

on large number of breast cancer population to emphasize our results and clarify the diagnostic importance of beclin1 and TGF- $\beta$  in the process of tumorigenesis.

## CONSENT

A Written informed consent was obtained from all study subjects.

## ETHICAL APPROVAL

The study was approved by the Institutional Review Board (IRB) of the NCI, Cairo University and was conducted according to the rules of Helsinki declaration for human studies.

## COMPETING INTERESTS

Authors have declared that no competing interests exist.

## REFERENCES

1. Morsy MM, Raafat A, Mohamed M, Fayed A. Prognostic Value of Percentage of Positive to Total Excised Axillary Lymph Nodes in Egypt with Triple Negative Breast Cancer: Multiple-Centers Experience. *Int. J. of Life Sciences*. 2018;6(3):719–732.
2. Arakawa S, Honda H, Yamaguchi H, Shimizu S. Atg12 Conventional autophagy ATG5-ATG12 LC3-PE Beclin-1 Alternative autophagy Rab-9. *Proceedings of the Japan Academy, Series B*. 2017;93(6): 378–385.
3. Abraham NM, Kirubel MM, Abraham DA. Autophagy as a Possible Target for Cancer Therapy. *Journal of Orthopedic Oncology*. 2018;04(01):1–9. Available:<https://doi.org/10.4172/2472-016X.1000124>.
4. Morris DH, Yip CK, Shi Y, Chait BT, Wang QJ. BECLIN 1-VPS34 Complex Architecture: Understanding The Nuts and Bolts of Therapeutic Targets. *Front. Biol. Beijing*. 2015;10(5):398–426. Available:<https://doi.org/10.1038/s41556-018-0061-z>.
5. Furler RL, Nixon DF, Brantner CA, Popratiloff A, Uittenbogaart CH. TGF- $\beta$  sustains tumor progression through biochemical and mechanical signal transduction. *Cancers*. 2018a;10(6):1–18. Available:<https://doi.org/10.3390/cancers10060199>.

6. Wang, Gong X, Xu J, Xie R. The Role of TGF- $\beta$  in Gastrointestinal Cancers. *Journal of Cancer Science & Therapy*. 2018; 10(11):345–350. Available:<https://doi.org/10.4172/1948-5956.1000566>.
7. Mizushima N. The exponential growth of autophagy-related research: From the humble yeast to the Nobel Prize. *Febs Letters*. 2017;591(5):681–689. Available:<https://doi.org/10.1002/1873-3468.12594>.
8. Hamurcu Z, Delibaşı N, Geçene S, Şener EF, Dönmez-Altuntaş H, Özkul Y, et al. Targeting LC3 and Beclin-1 autophagy genes suppresses proliferation, survival, migration and invasion by inhibition of Cyclin-D1 and uPAR/Integrin  $\beta$ 1/ Src signaling in triple negative breast cancer cells. *Journal of Cancer Research and Clinical Oncology*. 2018;144(3):415–430. Available:<https://doi.org/10.1007/s00432-017-2557-5>.
9. Wang MC, Wu AG, Huang Y, Shao, GL, Ji SF, Wang RW, et al. Autophagic regulation of cell growth by altered expression of Beclin 1 in triple-negative breast cancer. *International Journal of Clinical and Experimental Medicine*. 2015; 8(5):7049–7058.
10. Park JM, Huang S, Wu TT, Foster NR, Sinicrope FA. Prognostic impact of Beclin 1, p62/sequestosome 1 and LC3 protein expression in colon carcinomas from patients receiving 5-fluorouracil as adjuvant chemotherapy. *Cancer Biology and Therapy*. 2013;14(2):100–107. Available:<https://doi.org/10.4161/cbt.22954>
11. Chen Y, Yan J, Yu S, Wang X, Zheng Q. Over-expression of beclin-1 in gallbladder carcinoma and its relationship with prognosis. *Wspolczesna Onkologia*. 2014; 18(3):171–176. Available:<https://doi.org/10.5114/wo.2014.41395>.
12. Ávalos Y, Canales J, Bravo-Sagua R, Criollo A, Lavandero S, Quest AFG, et al. (2014). Tumor Suppression and Promotion by Autophagy. *BioMed Research International*. 2014;1–15. Available:<https://doi.org/10.1155/2014/603980>.
13. Parkhitko A, Myachina F, Morrison TA, Hindi KM, Auricchio N, Karbowiczek M, Henske EP. Tumorigenesis in tuberous sclerosis complex is autophagy and p62/sequestosome 1 (SQSTM1)-dependent. *Proceedings of the National Academy of Sciences*. 2011;108(30):12455–12460. Available:<https://doi.org/10.1073/pnas.1104361108>.
14. Li Z, Chen B, Wu Y, Jin F, Xia Y, Liu X. Genetic and epigenetic silencing of the beclin 1 gene in sporadic breast tumors. *BMC Cancer*. 2010;10(98):1–12. Available:<https://doi.org/10.1186/1471-2407-10-98>.
15. Claude-Taupin A, Fonderflick L, Gauthier T, Mansi L, Pallandre JR, Borg, et al. ATG9A Is Overexpressed in Triple Negative Breast Cancer and Its *In Vitro* Extinction Leads to the Inhibition of Pro-Cancer Phenotypes. *Cells*. 2018;7(12):1-17. Available:<https://doi.org/10.3390/cells7120248>.
16. Ciftci R, Tas F, Yasasever CT, Aksit E, Karabulut S, Sen F, et al. Clinical significance of serum transforming growth factor beta 1 (TGFB1) level in breast cancer. *Journal of Clinical Oncology*. 2014; 32(15):e11526. Available:<https://doi.org/10.1200/jco.2014.32.15>.
17. El-Aziz G, Kamel MM, Alkaffas M, Abdelhady EG, Rashed LA. Can Transforming Growth Factor Beta Affect Breast Cancer by Targeting MicroRNA 195? *J Mol Cell Biochem*. 2018;2(1):1–4. Available:<http://www.imedpub.com/journal-molecular-cellular-biochemistry>.
18. Scherer SD, Bauer J, Schmaus A, Neumaier C, Herskind C, Veldwijk MR, Sleeman JP. TGF- $\beta$ 1 is present at high levels in wound fluid from breast cancer patients immediately post-surgery, and is not increased by intraoperative radiation therapy (IORT). *PLoS ONE*. 2016;11(9):1–14. Available:<https://doi.org/10.1371/journal.pone.0162221>.
19. Harb OA, Salem AA, Haggag R, El-shorbagy S, Gertallah LM. Immunohistochemical expressions of SQSTM1 / p62, Beclin-1, and SOX4 in infiltrating duct carcinoma of the breast. *Egyptian Journal of Pathology*. 2016;62:95–103. Available:<https://doi.org/10.1097/01.XEJ.000484380.44411.44>.
20. EL-Husseini M, Hussein F, Bassily N, Abdelghany B. Clinical significance of TGF alpha, TGF beta1 and VEGF in Sera of



- Egyptian patients with breast cancer  
Clinical Significance of TGF Alpha , TGF  
Beta1 and VEGF in Sera of Egyptian  
Patients with Breast Cancer Abstract: The  
Egyptian Journal of Hospital Medicine.  
2013;52:555–565.  
Available:<https://doi.org/10.12816/0000592>
21. Zarzynska J. Two faces of TGF-beta1 in  
breast cancer. Mediators of Inflammation.  
2014;141747.  
Available:<https://doi.org/10.1155/2014/141747>.
22. Kiyono K, Suzuki H, Matsuyama H,  
Morishita Y, Komuro A, Kano MR, et al.  
Autophagy is activated by TGF-beta and  
potentiates TGF-beta-mediated growth  
inhibition in human hepatocellular  
carcinoma cells. Cancer Reseach. 2009;  
69(23):8844–8852.

---

© 2019 Elshaer et al.; This is an Open Access article distributed under the terms of the Creative Commons Attribution License (<http://creativecommons.org/licenses/by/4.0>), which permits unrestricted use, distribution, and reproduction in any medium, provided the original work is properly cited.

*Peer-review history:*  
*The peer review history for this paper can be accessed here:*  
<http://www.sdiarticle3.com/review-history/48202>