



Karyological Studies and Chromosomal Analysis of Fifteen Accessions of *Trichosanthes cucumerina* L. (Snake Gourd)

A. N. Osuagwu ^{a*}, C. U. Aguru ^b, L. O. Omoigui ^c and J. O. Olasan ^b

^a Department of Plant Science and Biotechnology, Michael Okpara University of Agriculture, Umudike, Nigeria.

^b Department of Botany and Environmental Science, University of Agriculture, Makurdi, Nigeria.

^c Department of Plant Breeding and Genetics, University of Agriculture, Makurdi, Nigeria.

Authors' contributions

This work was carried out in collaboration among all authors. All authors read and approved the final manuscript.

Article Information

Open Peer Review History:

This journal follows the Advanced Open Peer Review policy. Identity of the Reviewers, Editor(s) and additional Reviewers, peer review comments, different versions of the manuscript, comments of the editors, etc are available here: <https://www.sdiarticle5.com/review-history/87411>

Original Research Article

Received 20 March 2022

Accepted 30 May 2022

Published 18 June 2022

ABSTRACT

This is to investigate variability of karyological and chromosomal numbers of fifteen accessions of *Trichosanthes cucumerina* var *anguina* and *Trichosanthes cucumerina* var *cucumerina* L. (Snake Gourd) from four geopolitical zones in Nigeria. The studies were carried out using the root tips from the plant seedlings. The fifteen ecotypes were germinated in glass petri dishes covered with moisten cotton wool in the laboratory of the Department of Plant Science and Biotechnology, College of Natural Sciences, Michael Okpara University of Agriculture, Umudike, Umuahia, Abia State, Nigeria and was observed for 6-11 days. The glass petri dishes were kept in a dark cupboard for warmth needed for germination. Squashed and stained root tips with acetone orcein. The viewed somatic chromosome number of the fifteen ecotype of snake gourd (*Trichosanthes cucumerina* L.) studied from four geopolitical zone of Nigeria was 22. The karyological formulae differ from each other. The karyological formulae ranged from (5m+6sm-9m+2sm). Short arm (S) length ranged from (1.28±0.01-1.38±0.05). Long arm (L) length ranged from (1.79±0.02-1.90±0.03). The total length (S+L) ranged from (3.08±0.01-3.33±0.13). The arm ratio (L/S) ranged from (1.29-1.48). The relative value (S/L) demonstrated variability among the ecotypes which varied from (0.67 – 0.72µm). Centrometric index (S/L+ S/µm) affirmed variability among the ecotypes which varied from (1.95 – 2.15). Coefficient of variation of the fifteen ecotypes varied from (18.29 – 28.63%). The total form in percentages ranges

*Corresponding author: E-mail: ann_osuagwu@yahoo.com;

from (66 – 77%). Standard deviation among the ecotypes studied ranges from (0.29 – 0.46). The variance among the 15 ecotypes affirmed variability (0.08 – 0.22). The mean displayed differences among the ecotypes ranged from (1.54 – 1.67). The long arm and short arm lengths determined were more at zero (0.00) which demonstrated closest genotype with same karyotype composition in the four ecotypes were closely related. There were ecotypes closer to zero such as 0.02, 0.08, 0.04, - 0.04, have almost the same karyotype composition. Ecotypes within red colour lines have close karyotypes similarities (V2/V3). V₃, V₁₄, V₁₁, V₆ and V₈ were within yellow colour lines and shared karyotype similarities. V₇, V₁₄, V₁₂, V₁₅, were in the same blue lines and shared karyotype similarities. V₁₀, V₂, V₅ and V₄ were distinct from others in terms of their karyotype compositions. The chromosomal number of the fifteen accessions are the same 22. The karyotypes have similarities such as V₂, V₃, V₁₄, V₁₁, V₆ and V₈. Snake gourd from Edo State, Kadroko, Nassarawa State, Ukwa, Abia State and Ilorin, Kwara State shared karyotype similarities. V₁₀, V₂, V₅ and V₄ displayed variabilities among ecotypes studied.

Keywords: *Trichosanthes cucumerina*; chromosomal studies; karyology; long arm; short arm; ecotypes.

1. INTRODUCTION

In Nigeria, indigenous people traditionally use a wide range of plants as food and medicine. *Cucurbitaceae* family is genetically diverse, it contains about 130 genera and approximately 900 species, mainly distributed in tropical and sub-tropical regions [1]. The cucurbits family is as one of the economically groups, including the most species providing human with edible products and beneficial fibers [2]. Plants of this group have high genetic diversity for fruit shape and other fruit characteristics as a result of their above ground development [2].

Snake Tomato (*Trichosanthes cucumerina*), also known as viper gourd or long tomato, is a well-known plant, with fruit mainly consumed as a vegetable [3]. Snake gourd originated in India or the Indo-Malayan region in tropical Asia commonly cultivated in Sri Lanka, India, Malaysia, Peninsula, and Philippine [3]. *Trichosanthes cucumerina* is a natural antibiotic expectorant, laxative, cure constipation and has been shown to be excellent for diabetes [4]. *T. cucumerina* is used in treatment of wounds, boils, sores, skin eruptions, such eczema and dermatitis [5].

Trichosanthes cucumerina commonly called snake gourd, viper gourd, long tomato or snake tomato [3]. *Trichosanthes cucumerina* is an annual climber with a diploid chromosome of twenty-two (22) (2n) [6,7]. *Trichosanthes cucumerina* L. belongs to the family *Trichosanthes* which is the one of the important family of *Cucurbitaceae* [7]. *Trichosanthes* L. is the largest genus of the *cucurbitaceae* with 918 species [8-17]. *Trichosanthes* has two cultivated

species *Trichosanthes anguina* L. and *Trichosanthes dioca* Roxb and several wild species [18]. *Trichosanthes cucumeriodes* (ser). Maxim (Japanese sake gourd) is cultivated in Japan and China as a source of starch [17]. *Trichosanthes cucumerina* L have a wide variability, *Trichosanthes lobota*, *Trichosanthes wallichiana*, *Trichosanthes cordata* Roxb, *Trichosanthes laponica* and *Trichosanthes nervifolia* L. [18].

The objective of this study enumerates cytological characters by counting the number of chromosomes and karyological characteristics of the root tips of the plant.

2. MATERIALS AND METHODS

Viable seeds of snake gourd (*Trichosanthes cucumerina*) ecotypes were sourced and collected from different from the following locations (Table 1).

The fifteen ecotypes were germinated in glass petri dishes covered with moisten cotton wool in the laboratory of the Department of Plant Science and Biotechnology, College of Natural Sciences, Michael Okpara University of Agriculture, Umudike and was observed for 6-11days. The glass petri dishes were kept in a dark cupboard for warmth needed for germination. Young healthy roots (about 15minutes) were carefully collected at two-hour interval from 7:00 and 9:00am after two hours of germination for all the genotypes. Clean sterilized scalpel was used to excise the growing root tips of *Trichosanthes cucumerina* L. The harvested root tips of *Trichosanthes cucumerina* L genotypes were rinsed twice in distilled

Table 1. Viable seeds of snake gourd (*Trichosanthes cucumerina*) ecotypes

S/N	Source Location	Ecotype	Designation
1	Oshogbo Osun State 1	Rainforest	V1
2	Iwo, Osun State 2	Rainforest	V2
3	Makurdi, Benue State 1	Derived savannah	V3
4	Adikpo, Benue State 2	Derived savannah	V4
5	NHST – 0588	Guinea savannah	V5
6	Ikwuano, Abia State 1	Rainforest	V6
7	Ukwa, Abia State 2	Rainforest	V7
8	NAGRAB – 00753	Guinea savannah	V8
9	Ikom, Cross River State	Rainforest	V9
10	Rumibekwe, River State	Rainforest	V10
11	Oye-Ekiti, Ekiti State	Rainforest	V11
12	Nasarawa State	Derived savannah	V12
13	Elelenwo – Rivers State	Rainforest	V13
14	Benin, Edo State	Rainforest	V14
15	Ilorin, Kwara State	Guinea savannah	V15
Total			15

water and pre-treated in 0.002ml solution of 8-hydroxyquinoline 0.058g dissolved in 100ml of distilled water for four (4) hours. The Pretreated root tips were rinsed twice in distilled water and fixed in 3:1 glacial acetic alcohol (3-part glacial acetic, to 1 parts ethanol). The fixative was freshly prepared for use and the root tips were fixed at room temperature for 24 hours, after which they were stored in 70% ethanol for further use. The fixed root tips were again rinsed twice in distilled water then hydrolyzed in water bath and controlled at 60°C for six (6) minutes.

The root tips were stored in 70% ethanol solution, and preserved in a refrigerator until it was needed for squashing. The hydrolyzed root tips were rinsed twice in distilled water, placed on a clean grease free slides (one root tip per slide) and excess fluid was removed using drying paper. The apical 1mm (whiter and denser) portion of the root tips were carefully cut off on the slide. One to two drops of 1% acetone orcein was added to the specimen and the material was macerated thoroughly. A thin cover slip was laid on top of the specimen and the slide was placed in a folded filter paper, and thumb pressure was applied to remove excess stain. The cover slip was tapped gently with the blunt end of a biro. Tapping continued until the materials became well spread out and hardly visible. The corner slip was sealed with nail vanish and then viewed under the low and high power digital AMSCOPE 3000 camera microscopes. The slides were placed on the stage of the microscope and then adjusted for proper and clearer views at various magnifications; Photomicrographs of the cells at

various stages of mitosis were taken at x4 x10, x40 and x100 with oil immersion.

Fresh root tips of 1 – 1.5 cm long was cut from rapidly growing seedlings (2 – 3 weeks after planting). The root tips was pretreated with 0.5 g of 8 – hydroxyquinolene in 100 ml of distilled water at room temperature for 3 hours. Samples of the root tips were subsequently washed three times with distilled water for 5 minutes at room temperature. The root tips were then fixed in Carnoy's fixative (Glacial acetic acid: Ethanol 3:1) overnight or for 24 hours at room temperature. Thereafter there was a thorough washing with distilled water after which a 1 NHCl was added using a dropper for hydrolysis. The root tips were placed in 1NHCl solution in a test tube and place in a water bath at 60⁰ C for 6 – 8 minutes. Thermometer was used to measure and ensure that the needed temperature was achieved. The hydrolyzed root tips were allowed to stand for 10 minutes to hydrolyze the cells. The HCl was then removed from the test tubes using the dropper. The petri dish was refined with distilled water twice. The root tips were removed and placed in a glass slide with the help of a forcep the root tips were squashed properly. The squashed root tips were then stained using 2% aceto orcein carmine. The stain was added at the centre of the slide (microscopic slide) and allowed to stand for 10-15 minutes to enable the root tips pick up the stain.

The best metaphase plates in terms of clarity were photographed using an external camera Amscope digital Camera 3000MA to the

microscope and laptop and scanned at 1000 – resolutions.

All measurements were recorded using the software images and measurement options. Chromosomal morphology was described using nomenclatures proposed by [19] while numerical characterization was done using other parameters.

2.1 Formulae used in the Study

The arm ratio (AR) was computed as the ratio of long arm length of a chromosome pair to the short arm length of the chromosome pair using the formulas;

1. $AR = L/S$
where L = long arm length of chromosome
S = short arm length of chromosome
2. $TL = L + S$
Where L = long arm length of chromosome
S = short arm length of chromosome
3. $R - Value = S/L$
where L = long arm length of chromosome
S = short arm length of chromosome
4. $\% TF = \Sigma S / \Sigma L \times 100$
 $\% TF =$ percentage total form
 $\Sigma S =$ Sum of short arm length
5. Centrometric index (CI) = $(S/L + S)$
where L = long arm length of chromosome
S = short arm length of chromosome
6. Centrometric gradient (CG) = $SX/TLX \times 100$
where SX = Length of median short arm chromosome
TLX = Total length of long arm of chromosome

7. $CV = SD/Mean \times 100$
CV = Coefficient of variability
SD = Standard deviation

Karyotype asymmetry was estimated using two numerical parameters described to [20] as follows:

8. Intrachromosomal index (A_1)
8. Interchromosomal index (A_2)

$$A1 = \Sigma SX / LX / N$$

$$A2 = SD / X$$

where SX = Length of median short arm chromosome

LX = Length of long arm of chromosome

SD = Standard deviation

X = Mean Chromosome length

N = Number of homologue (n=12)

2.2 Statistical Analysis of Data

The data generated from the study on short arm length, long arm length, arm ratio, R-value and centrometric index were analyzed using the PAST 3 software procedure and test with the [21].

3. RESULTS

The cytological investigation revealed that meristematic cells of *Trichosanthes cucumerina* L was a diploid plant $2n=22$ chromosomes and the principal chromosomes $x=11$ for all the snake gourd ecotypes. This is the somatic metaphase (Plate 1).

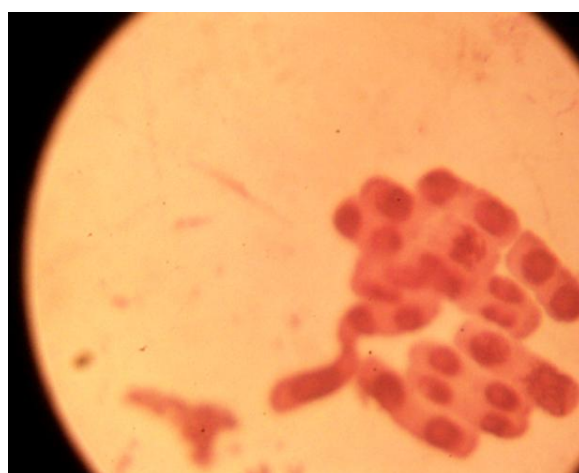


Plate 1. Somatic metaphase phase

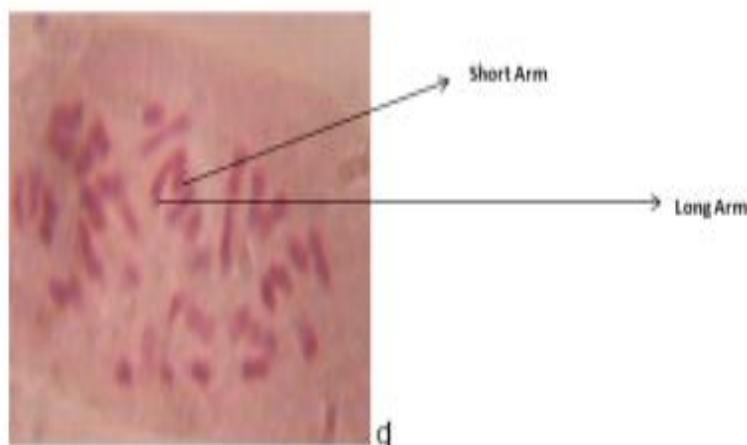


Plate 2. This is the somatic metaphase plate of *T.cucumerina* 2n=22 showing the long arm and short arm of the chromosome

T. cucumerina short arm (S) ranged from (1.29±0.05 – 1.38±0.05µm), long arm (L) ranged from (1.79±0.02 – 1.98 ±0.00µm), total length (S+L) revealed the variability among the ecotypes (3.08±0.03 – 3.33±0.13µm). The arm rate (L/S) µm among the ecotypes confirmed that it ranged from (1.37 – 1.48µm). The relative value (S/L) demonstrated variability among the ecotypes which varied from (0.67 – 0.72µm). Centromeric index (S/L+ S) affirmed variability

among the ecotypes which varied from (1.95 – 2.15µm) Table 2.

Table 3 Coefficient of variation of the fifteen ecotypes varied from (18.29 – 28.63%). The total form in percentages ranges from (66 – 77%). Standard deviation among the ecotypes studied ranges from (0.29 – 0.46). The variance among the 15 ecotypes affirmed variability (0.08 – 0.22). The mean displayed differences among

Table 2. Short arm (S), long arm (L), total length (S+L), arm ratio (L/S), relative value (S/L) and centromeric index (S/L + S) of 15 genotypes of *Trichosanthes cucumerina* L

<i>Trichosanthes cucumerina</i>	Short arm (S) µm	Long arm (L) µm	Total Length (S +L) µm	Arm Ratio (L/S) µm	R-Value (S/L) µm	Centromeric index (S/L +S) µm
OSH, OSU	1.29± 0.05	1.79±0.02	3.08± 0.01	1.38	0.72	2.01
NAGRAB	1.33±0.01	1.87±0.11	3.20±0.03	1.41	0.71	2.04
NHST 0588	1.35±0.03	1.98±0.10	3.33±0.13	1.51	0.66	1.96
IWO, OSU	1.32±0.10	1.89±0.03	3.21±0.01	1.43	0.69	2.01
IKWUANO	1.35±0.03	1.98±0.01	3.33±0.13	1.46	0.68	2.03
CRS-IKM	1.32±0.00	1.88±0.10	3.20±0.03	1.42	0.70	2.02
RIV-RUM	1.33±0.01	1.84±0.01	3.17±0.03	1.38	0.72	2.05
ABI-UKWA	1.31±0.02	1.89±0.03	3.20±0.01	1.42	0.69	2.00
EKI-OYE	1.31±0.01	1.88±0.05	3.19±0.019	1.37	0.70	2.01
NAS-KDK	1.38±0.05	1.79±0.03	3.17±0.03	1.29	0.71	2.15
KWA-ILO	1.32±0.01	1.87±0.01	3.19±0.03	1.42	0.72	2.03
RIV-ELE	1.28±0.01	1.90±0.03	3.18±0.03	1.48	0.69	1.95
EDO-BEN	1.32±0.03	1.89±0.01	3.21±0.01	1.43	0.69	2.01
BEN-MKD	1.32±0.03	1.86±0.01	3.18±0.05	1.45	0.71	2.03
BEN-MKD	1.29±0.01	1.89±0.03	3.18±0.01	1.47	0.68	1.97

Legend: ABI-UKW= Abia-Ukwa, KWA-ILO= Kwara-Ilorin, OSU-OSH-1=Osun-Oshogbo 1, BEN-MKD1=Benue-Makurdi 1, RIV-RUM= Rivers-Rumibekwe, ABI-IBE= Abia- Iberenta, EKI-OYE= Ekiti-OyeEkiti, BEN-MKD2= Benue-Makurdi 2, RIV-ELE= Rivers-Elelenwo, OSU-OSH-2= Osun-Oshogbo 2, ABI-IKW=Abia-Ikwa, EDO-BEN= Edo-Benin, NAS-KDK= Nasarawa-Kardarko, CRS-IKM= Cross Rivers-Ikom

Table 3. *T. cucumerina* coefficient of variation total form, standard deviation, variance, mean and karyotype formula of the fifteen ecotypes was revealed in this table

Trichosanthes Cucumerina Genotypes	CV (%)	Total form (%)	STD DEV	Variance	Mean	Karyotype Formula (Xm+Ysm)
OSH, OSU	25.11	69	0.40	0.16	1.61	8m+3sm
OSH, OSU	22.95	72	0.35	0.13	1.54	7m+4sm
NAGRAB	23.86	71	0.38	0.14	1.60	6m+6sm
NHST	28.63	66	0.46	0.22	1.63	7m+5sm
ABI-IKW	26.75	68	0.45	0.19	1.67	5m +6sm
CRS-IKM	24.75	70	0.39	0.16	1.60	7m +4sm
RIV-RUM	22.75	72	0.36	0.13	1.58	6m +sm
ABI-UKW	25.63	69	0.41	0.17	1.68	7m+4sm
EKI-OYE	25.27	70	0.40	0.16	1.59	8m+3sm
NAS-KDK	18.29	77	0.29	0.08	1.58	9m+2sm
KWA-ILO	24.38	71	0.38	0.15	1.59	7m+4sm
RIV-ELE	27.57	67	0.43	0.19	1.59	6m+5sm
EDO-BEN	25.12	69	0.40	0.16	1.60	8m+3sm
BEN-MKD	24.01	71	0.38	0.14	1.59	8m+3sm
BEN-MKD	26.68	68	0.42	0.18	1.59	6m+5sm

Legend: ABI-UKW= Abia-Ukwa, KWA-ILO= Kwara-Ilorin, OSU-OSH-1=Osun-Oshogbo 1, BEN-MKD1=Benue-Makurdi 1, RIV-RUM= Rivers-Rumibekwe, ABI-IBE= Abia- Iberenta, EKI-OYE= Ekiti-OyeEkiti, BEN-MKD2= Benue-Makurdi 2, RIV-ELE= Rivers-Elelenwo, OSU-OSH-2= Osun-Oshogbo 2, ABI-IKW=Abia-Ikwa, EDO-BEN= Edo-Benin, NAS-KDK= Nasarawa-Kardarko, CRS-IKM= Cross Rivers-Ikom

the ecotypes which ranged from (1.54 – 1.67). Karyotype formular differs among the ecotype which was (8m + 3sm – 5m + 6sm).

CN = Chromosome number, 2n = diploid; M = metacentric chromosome and Sm = Sub metacentric chromosomes

CV = Coefficient of variation
TF = Total form
KF = Karyotype formula XM + YSm

Legend: ABI-UKW= Abia-Ukwa, KWA-ILO= Kwara-Ilorin, OSU-OSH-1=Osun-Oshogbo 1, BEN-MKD1=Benue-Makurdi 1, RIV-RUM= Rivers-Rumibekwe, ABI-IBE= Abia- Iberenta, EKI-OYE= Ekiti-OyeEkiti, BEN-MKD2= Benue-Makurdi 2, RIV-ELE= Rivers-Elelenwo, OSU-OSH-2= Osun-Oshogbo 2, ABI-IKW=Abia-Ikwa, EDO-BEN= Edo-Benin, NAS-KDK= Nasarawa-Kardarko, CRS-IKM= Cross Rivers-Ikom

The scatter diagram revealed that long arm and short arm length for the determined the proximities for karyotyping. The long arm and short arm length which determined was more at zero (0.00) which demonstrated closest genotype with same karyotype composition in the diagram four ecotypes were closely related. There were ecotypes closer to zero such as 0.02, 0.08, 0.04,

- 0.04, have almost the same karyotype composition.

Scatter diagram incorporating long arm and short lengths for the genotype chromosomes for determining proximities for karyotyping

Karyotypes mapping using kernel density chord confirmed. *T. cucumerina* ecotypes and how they were related to each other. Ecotypes within red colour lines have close karyotypes similarities (V2/V3). V₄, V₁₄, V₁₁, V₆ and V₈ were within yellow colour line share karyotype similarities. V₇, V₁₄, V₁₂, V₁₅, were in the same blue lines and share karyotype similarities. V₁₀, V₂, V₅ and V₄ were distinct from others in terms of their karyotype compositions.

4. DISCUSSION

Trichosanthes cucumerina (L) is underutilized crop in Nigeria and is disappearing from the home stead of our various garden. The cytological studies of *T.cucumerina* was investigated to appropriate their taxonomic evidences.The chromosome number of the fifteen of *T. cucumerina* (snake gourd) (Plate 1 – 2) were 2n = 2x = 22 which is in agreement with the work of [22] who reported that *T. cucumerian* var *anguina* and *T. cucumerian* var *cucumerina* had the same chromosome number but

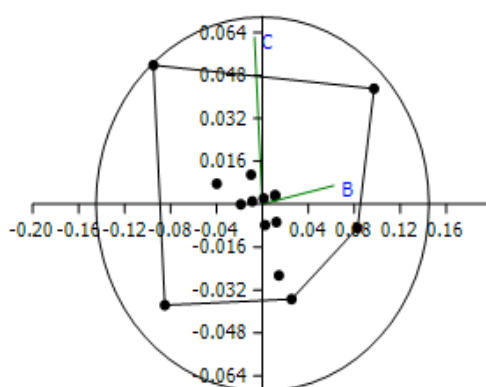


Fig. 1. illustrated the relationship between fifteen *T. cucumerina* ecotypes investigated

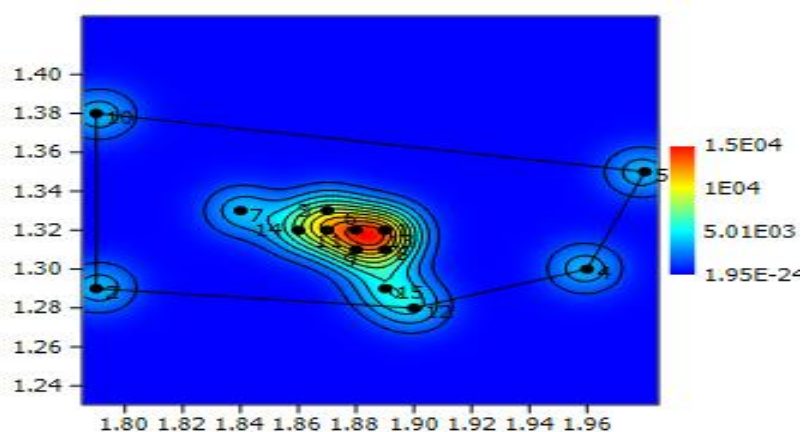


Fig. 2. Kernel density chart showing 15 *T. cucumerina* genotype karyotypes mapping

Y – axis = Short arm lengths

X – axis = Long arm lengths

differs in their karyotype. The karyotype of 15 ecotypes of *T. cucumerina* varied considerably depending on the position of metacentric and submetacentric chromosomes and its ranged from short arm (S) (1.29 ± 0.05 – 1.38 ± 0.05) long arm (1.79 ± 0.02 – 1.98 ± 0.00) total length (S + L/Nm) (3.08 ± 0.03 – 3.33 ± 0.134 m), arm ratio (1.37 – 1.48 Nm), relative value (0.67 – $0.72 \mu\text{m}$, centromeric index (1.95 – $2.15 \mu\text{m}$). This is in agreement with the findings of [23] who reported that *Syngonium podophyllum* chromosome length ranged from ($1.44 + 0.08 \mu\text{m}$ – $3.13 + 0.18 \mu\text{m}$), short arms (0.99 ± 0.10 – $1.83 \pm 0.11 \mu\text{m}$), arm ratio (1.23 – $2.12 \mu\text{m}$) Karotype formula of $7m + 5sm$. This work is not in agreement with the work of [6] who reported on the chromosome of six commercial cultivated cucurbits ranged from $2n = 26, 26, 22, 24, 14$ and 22 . The karyotype formula differs from the karyotype of six edible cucurbits. The karyotype formular ranged from ($8m + 3sm - 6m + sm$)

while that of [6] ranged from $26m - 2Sm + 20m$. This work is not in agreement with the mean length of chromosome of genus *Ornithogalum* L. which ranged from 1.20 – $7.63 \mu\text{m}$ as reported by [24].

This work is not in agreement with [25] who reported that *Centaurea species* has different basic chromosome numbers which were $2n = 18$, *C. demirizii* $2n = 16$, *C. leptophylla*, $2n = 36$, *C. Baligna* $2n = 36$. The karyological formular ranged from $4m + 5sm - 3m + sm$. [26] investigated chromosome number and karyotype of sixteen taxa of genus *Cirsium mill* and observed that chromosome number were the same but their karyotype varied. [27] reported that *Trichosantes borenensis*, *T. motanna*, *T. ovigera*, *T. pubera*, *T. quinquanglata*, *T. tricuspida*, *T. villosa*, *T. warwrae* and *T. cucumeriina var anguina* have the same somatic chromosome number of ($2n=22$).

5. CONCLUSION

Chromosome and karyotype composition and formula of the fifteen accessions of *T. cucumerina*. The chromosome number of twenty-two (22) was confirmed by this work in spite of picking the *T. cucumerina* ecotypes from different locations. The karyotype formula varied considerably. The following ecotypes karyotypes were distinct: Rumibekwe, River State, Iwo, Osun State, NHST-0588 and Adikpo, Benue State.

DISCLAIMER

The products used for this research are commonly and predominantly used products in our area of research and country. There is absolutely no conflict of interest between the authors and producers of the products because we do not intend to use these products as an avenue for any litigation but for the advancement of knowledge. Also, the research was not funded by the producing company rather it was funded by personal efforts of the authors.

FUNDING

This research work was funded by Tertiary Education Trust Fund of Nigeria (TETFUND).

COMPETING INTERESTS

Authors have declared that no competing interests exist.

REFERENCES

1. Onyenike AA, Simloluwa RA, Oladapo DJ, Amaghereonu CO, Afolabi ET, Ebirikwem VE, Adeyinka B, Amoda WM. Transferability of SSR markers used for Assessment of Genetic Relationship in five species/Genera in cucurbitacea. Egypt Journal Botany. 2020;60(1):275 – 286.
2. Bisogonin DA. Origin and devolution of cultivated cucurbits. Ciencia rural. 2002;32(5):715 – 723.
3. Liyanage R, Nadeeshani H, Layathilake C, Visvanathan R, Wimalasin S. Comparative Analysis of Nutritional and Bioactive properties of Aerial parts of Snake Gourd (*Trichosanthes cucumerina* Linn). International Journal of Food Science, Available: <http://dx.doi.org/10.1155/2016/8501637>
4. Edeoga HO, Osuagwu GGE, Omosun G, Mbaebie BO, Osuagwu AN. Pharmaceutical and Therapeutic potential of some wild Cucurbitaceae species from South-East Nigeria. Recent Research in Science and Technology. 2010;2(1):63-68.
5. Arawwawala M, Thabre I, Arambewel L. Antidiabetic activity of *Trichosanthes cucumerina* in normal and streptozotocin-induced diabetic rats. International Journal of Biological and Chemical Sciences. 2011;3(2):56.
6. Alam MMd, Haque MSK, Biswajit G. Karyomorphological studies of six commercial cultivated edible cucurbits. Bitter gourd, sponge gourd ridge gourd, snake gourd, ash gourd and cucumber, Caryologia. 2018;71(2):150-159.
7. Ekeke C, Agogbua JU. Morphological and Anatomical Studies of *Trichosanthes cucumerina* L. International Journal of Plant and Soil Science, 2018;25(6):1–8.
8. Renner SS, Schaefer H. Phylogeny and evolution of the Cucurbitaceae. In: Grumet R, Katzir N, Garcia-Mas J (Eds) Genetics and genomics of Cucurbitaceae. Springer, Cham. 2017;13–23. Available: https://doi.org/10.1007/7397_2016_14
9. Jeffrey C. Further notes on cucurbitaceae V. the cucurbitaceae of the Indian Subcontinent Kew Bull. 1980;34:789-809.
10. Jeffrey CA. An outline classification of the Cucurbitaceae. In: Bates, D. M. Robinson, R. W. and Jeffrey, C. (eds.). Biology and utilization of the Cucurbitaceae. Cornell University Press Ithaca, NY. 1990;44946
11. Yueh CH, Cheng CY. The Chinese medicinal species of the genus *Trichosanthes* L. Acta Phytotax. Sin. 1980;18:333–352.
12. Huang LQ, Yang B, Yue CX, Cheng JR. Pollen morphology of *Trichosanthes* and its taxonomic significance. Acta Phytotax. Sin. 1997;35(2):125–135.
13. Huang LG, Yue CX, Yang B, Cheng CY, Li NH, Ruan C, Qu LJ, Gu HY. Systematic studies on *Trichosanthes* L. (Cucurbitaceae). In: S.T. Chiu and C.I. Peng (eds.), Proc. Cross Strait Symp. Flor. Div. Conserv. Taipei 1996, Natl. Mus. Nat. Sci., Taichung (Taiwan). 1998;75–83.
14. Huang L, Lu A, Jeffrey C. *Trichosanthes*. In: Flora of China (draft). 2007;19.

15. Rugayah EA de Wilde WJJO. Conspectus of *Trichosanthes* (Cucurbitaceae) in Malaysia. *Reinwardtia*. 1999;11:227–280.
16. de Boer HJ Thulin M. Synopsis of *Trichosanthes* (Cucurbitaceae) based on recent molecular phylogenetic data. *Phytokeys*. 2012;12:23–33.
17. Bharathi LK Behera TK Sureja AK John JK Webner TC. Horticultural reviews, vol. 41, First Edition. Edited by Julas Janick Published by John Wiley and Sons Inc. Wiley Blackwell; 2013.
18. Devi DN Mariappan S Arumugam T Anandakuma CR. Genetic variability, heritability, correlation and path analysis in snake gourd (*Trichosanthes cucumerina* L.). *Electronic Journal of Plant Breeding*. 2017;8(2): 566-571
19. Levan A Fredga KL Sandberg AA. Nomenclature for centromeric position on chromosomes. *Hereditas*. 1964; 52:201–220
20. Romero Zarco CM. A new method for estimating karyotype asymmetry. *Taxon*. 1986;35:526– 530
21. Biometrics GenStat Procedure Library 18th Edition Software.
22. Bhowmick BK Jha S. Difference in Karyotype and Fluorochrome Banding patterns among variations of *Trichosanthes cucumerina* with different fruit size. *Cytologia*. 2019;84(3):237-245.
23. Ekeke C Elechi A Okoli BE. Karyological and Anatomical studies on *Syngonium podophyllum Schoti* (Araceae). *The Journal of Science*. 2019; 21(1):99-107.
24. Ozturk D Koyacu O Yaylaci OK Ozgisi K O Okan S Suleyman T. Karyological studies on the four *Ornithogalum* L., (Asparagaceae) taxa from Eskishehir (Central Anatolia, Turkey). *Caryologia*. 2014;67(1):79-85.
25. Uysal T Bozkurt M Sezer E NS Eritugurl K Tugay O Karyological studies of four endemic *Centaurea* L. species *Caryologia*. 2015;68(4):339–346.
26. Kirian Y. Karyological Investigation of Sixteen *Cirsium* Mill. (Asteraceae, Cardueae) Taxa from Turkey. *Cytologia*. 2018;83(4):407–414.
27. Rugayah Daranedi D. The Somatic Chromosomes Numbers of Some Species *Trichosanthes*. *Floribunda*. 2004;2(6):155-160.

© 2022 Osuagwu et al.; This is an Open Access article distributed under the terms of the Creative Commons Attribution License (<http://creativecommons.org/licenses/by/4.0>), which permits unrestricted use, distribution, and reproduction in any medium, provided the original work is properly cited.

Peer-review history:

The peer review history for this paper can be accessed here:
<https://www.sdiarticle5.com/review-history/87411>