



# Research on License Plate Recognition Method Based on HALCON

Song Wang <sup>a\*</sup>

<sup>a</sup> School of Mechanical Engineering, North China University of Water Resources and Electric Power, Zhengzhou, 450000, China.

## Author's contribution

The sole author designed, analysed, interpreted and prepared the manuscript.

## Article Information

DOI: 10.9734/AJRCOS/2022/v14i330339

## Open Peer Review History:

This journal follows the Advanced Open Peer Review policy. Identity of the Reviewers, Editor(s) and additional Reviewers, peer review comments, different versions of the manuscript, comments of the editors, etc are available here: <https://www.sdiarticle5.com/review-history/91030>

Short Research Article

Received 11 June 2022  
Accepted 17 August 2022  
Published 19 August 2022

## ABSTRACT

With the rapid development and continuous improvement of image processing technology, the intelligent management of traffic management system for vehicles has accelerated the speed of road safety information, in which the car license plate as the identification of vehicle identity, the identification of its character information is the key to the license plate recognition system. In order to solve the problem of the traditional license plate recognition algorithm such as long development period, this study adopts the HALCON as a programming platform, the acquisition of image preprocessing to enhance image contrast, through the affine transformation to complete correction of tilt of the image, and at the completion of the design after character segmentation OCR based on neural network classifier to complete accurate recognition of Chinese characters, letters and Numbers. The experiment shows that the system has the ability to adapt to the environment and can recognize the license plate information efficiently and accurately.

**Keywords:** Machine vision; character recognition; affine transformation; expansion processing.

## 1. INTRODUCTION

License plate recognition technology plays an important role in road safety management system [1]. It is widely used in highway

automatic toll collection system, abnormal stop alarm system and residential area access control, etc. It is an important means to speed up road information management [2].

\*Corresponding author: E-mail: wangsong\_mail1998@126.com;

Foreign research on license plate recognition relatively early and achieves good recognition results, the domestic research institutions also carried on the related research and discussion, the current mainstream of license plate recognition methods are: using the projection features of license plate recognition method, suitable for layout structured sample figure, but plate wear or tilt will has a great influence on the identification results, poor anti-interference ability [3]; Based on wavelet, this recognition method can extract Chinese character features of license plate directly from gray image without binarization, which avoids the loss of Chinese character structure information caused by binarization, but the recognition effect is not ideal when the character location is not accurate [4].

HALCON is developed by the German company is relatively perfect package machine vision algorithms [5], including filtering, morphological analysis, geometric measuring and computing functions such as template matching, classification, and these functions are not designed for a specific object, most has the characteristics of general application, so almost related to image processing can be done by HALCON [6], This is why HALCON is widely used in various fields such as medical impact, automated detection, and monitoring.

To enable users to develop visual systems in as little time as possible, HALCON includes HDevelop, an interactive programming interface where you can write, modify, and execute programs directly in HALCON code and view all variables as they go along. After the completion of the design can directly output C, C++, VB, C#, VB and other program code, set into the user's program. HDevelop links to hundreds of sample applications simultaneously. In addition to instructions on individual computing functions, users can also find examples of applications in different categories at any time for easy reference.

HALCON does not limit the equipment for making images, and users can choose the appropriate equipment. The original factory has provided driver links for more than 60 kinds of cameras. Even the cameras that are not yet supported can not only easily capture images through Pointer, but also write DLL files and system connections by themselves using HALCON's open architecture.

In addition, to shorten the user's design cycle, HALCON includes HDevelop, an interactive

programming interface that allows users to write simple HALCON code and then directly output C, C++, VB code to be nested in their own programs [7].

This study constructs a license plate recognition system based on HALCON, and realizes the recognition of segmented characters by designing a classifier based on neural network [8]. The system avoids the recognition obstacle brought by the projection feature method by correcting the tilted image, and prevents the loss of character structure by expanding the acquired characters [9]. The system successfully applies the visual detection technology to the license plate character recognition, and realizes the recognition and display of license plate information efficiently and quickly.

## 2. METHODOLOGY

### 2.1 The Overall Design

The image collected in natural environment often has a variety of adverse factors that affect the recognition results, so after reading the image file to be processed, the image should first be preprocessed by gray level, binarization and so on, so as to make the target features in the image more obvious. In addition, the pose of the license plate in the read image is not the same, which brings some difficulty to the positioning of the characters [10]. This study adopts the affine transformation method to adjust the pose of the image and obtains good results. Finally, OCR classifier based on neural network is trained to recognize the license plate character, and the recognition result is displayed on the original image [11-13].

### 2.2 Image Acquisition

In this study, the `read_image ()` operator is called in the HALCON programming environment to read the license plate image that has been stored in the computer (HALCON supports common image formats such as BMP, PNG, JPGE and GIF), and the reading result is shown in Fig. 2. HALCON also provides access to hundreds of industrial cameras and image capture cards, allowing users to capture images of license plates in real time [14].

### 2.3 Image Preprocessing

The quality of images acquired under natural conditions is often affected by factors such as

uneven illumination, mechanical vibration, camera performance and so on. Even the license plate itself may have pollution, defects and other factors that affect the recognition results [15]. Therefore, the license plate image should be preprocessed by image preprocessing before the location segmentation and recognition, to enhance the contrast between the license plate and the background environment so as to reduce the difficulty of post-image processing.

### 2.3.1 Gray level processing

Generally, a pixel is composed of the values of R, G and B channels, and the value of each channel is between 0 and 255, which makes the possible color values of each pixel  $256 \times 256 \times 256$ . The gray image is a special color image with the same components of R, G and B, and there are only 256 color variation ranges for the computer. In addition to the reduction of the original data, RGB does not reflect the morphological characteristics of the image better than the gray

image. Therefore, this study uses `rgb2gray()` operator to gray process the image based on HALCON. The common gray-scale methods are component method, maximum method and weighted average method [16]. The weighted average method is adopted here, and the transformation relation is shown in Formula (1). The transformation result is shown in Fig. 3:

$$gray = 0.299 * red + 0.587 * green + 0.114 * blue \quad (1)$$

### 2.3.2 Contrast enhancement

Due to the phenomenon that the image contrast after gray-scale may not reach the desired level, the operator `scale_image()` is further invoked in HALCON to enhance the image contrast by scaling the gray value of the image. Formula (2) describes the algorithm, where `GMax` and `GMin` are the maximum and minimum gray value of the image respectively [17]. Fig. 4 is the processing

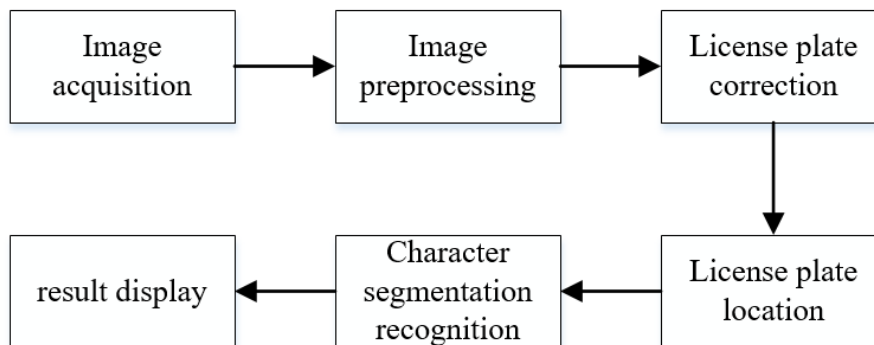


Fig. 1. System flow chart



Fig. 2. Read the original image



**Fig. 3. Image after gray-scale processing**



**Fig. 4. Image with enhanced contrast**

result of contrast enhancement. Compared with Figs. 2, 3 and 4, it can be seen that the image contrast is significantly enhanced after gray-scale and image contrast enhancement.

$$g^{\wedge}' = g * 255 / (GMax - GMin) - Mult * GMin \quad (2)$$

### 2.3.3 Binarization processing

Binarization is to roughly select the position of the license plate to facilitate the subsequent calculation of license plate tilt Angle and the choice of character region [18]. The gray histogram (as shown in Fig. 5) is used to determine the threshold, and all pixels whose gray values meet the threshold conditions are returned in the form of regions by calling the threshold () operator based on the Gaussian filter

bimodal method. The binarization result is shown in Fig. 6.

### 2.4 License Plate Image Correction

After the above preprocessing, the image suitable for feature extraction with stronger contrast is obtained. However, this cannot guarantee that the license plate in the actual image is always in the same pose, especially the inclined image which is not conducive to the accurate positioning of the character position. Therefore, the license plate pose needs to be further corrected and positioned [19]. Common geometric transformation methods include affine transformation, projection transformation and polar transformation. This study uses affine transformation to adjust the pose of detected license plate.

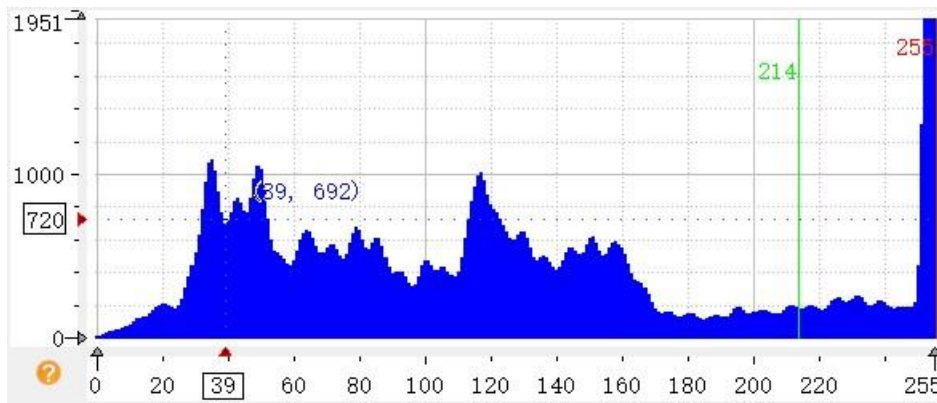


Fig. 5. Gray scale histogram



Fig. 6. The result graph after binarization processing

The affine transformation can modify the translation and rotation Angle of the object. The affine transformation consists of a linear part and a part, and the mathematical description is shown in Equation (3). This way of matrix column write need translation part separately, every time when the problem description is too cumbersome, so on the basis of the original coordinate this expression need to translation part separately, when the problem description is too trivial, therefore on the basis of the original coordinate so as to realize the coordinates of the introduction of the third value is 1 only with simple multiplication of the affine transformation can be realized, The mathematical description is as in Equation (4). Where R and c respectively represent the column and row coordinates of pixels [20].

$$\begin{pmatrix} r' \\ c' \end{pmatrix} = \begin{pmatrix} a_{11} & a_{12} \\ a_{21} & a_{22} \end{pmatrix} \begin{pmatrix} r \\ c \end{pmatrix} + \begin{pmatrix} T_r \\ T_c \end{pmatrix} \quad (3)$$

$$\begin{pmatrix} r' \\ c' \\ 1 \end{pmatrix} = \begin{pmatrix} a_{11} & a_{12} & a_{13} \\ a_{21} & a_{22} & a_{23} \\ 0 & 0 & 1 \end{pmatrix} \begin{pmatrix} r \\ c \\ 1 \end{pmatrix} \quad (4)$$

By calling the operator `orientation_region ()` on HALCON platform, the region returned by the above binarization was fitted to the minimum enclosing ellipse, and the Angle between the major axis of the ellipse and the horizontal direction was taken as the inclination Angle phi of the image, as shown in Fig. 7. The `area_center()` operator is used to calculate the center point coordinates and area of the region. The `vector_angle_to_rigid ()` operator calculates the affine transformation according to the correspondence between points and two corresponding angles, and returns it as the homogeneous transformation matrix `HomMat2D`. The `affine_trans_image ()` affine transformation is described by the homogeneous transformation matrix given in `HomMat2D` [21]. The corrected image is shown in Fig. 8.

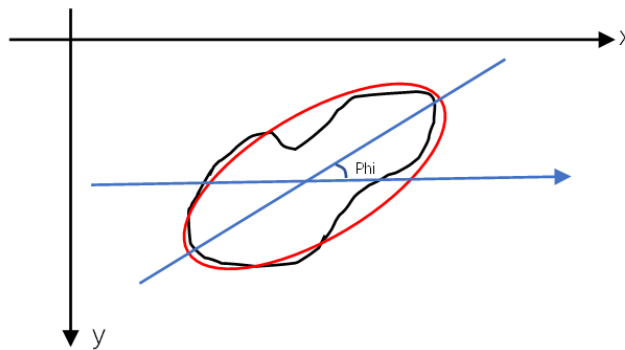


Fig. 7. Find the inclination Angle of the outer ellipse



Fig. 8. The result of image correction

### 3. RESULTS AND DISCUSSION

#### 3.1 License Plate Location and Character Segmentation

After image preprocessing and image correction, a more suitable candidate area of vehicle license plate can be obtained. Next, the steps and methods of license plate location and character segmentation are introduced.

- (1) The connected domain obtained by binarization is divided into several regions. The connection () operator is called in HALCON to split the disconnected regions into independent regions, and the result is shown in Fig. 9.
- (2) A number of connected domains of characters to be recognized are obtained by shape selection. The call select\_shape () operator uses the region area feature and the column and column coordinate feature to extract the license plate

character area precisely, which reflects the important significance of rotation correction for license plate. The selection results are shown in Fig. 10.

- (3) Each character is separately processed as a connected domain by swelling processing. Most of the Chinese characters have stroke discontinuous phenomenon, which makes the shape of a simple choice does not make Chinese characters which connected domain, this study use dilation\_rectangle1 () operator through a rectangular structure element to expansion of the selected area, makes the original broken parts connected together, expand the results as shown in Fig. 11.

Then, through Union1 () and connection (), several regions of each character that form a separate connected domain are regenerated, and the final segmentation result is shown in Fig. 12.



Fig. 9. The resulting graph of the splitting of connected domains



Fig. 10. Select the character area



Fig. 11. Connected domain expansion processing

### 3.2 Character Recognition

Based on the HALCON platform, this study uses the learning and memory functions of neural networks to match the segmented character regions with the previously obtained samples to identify characters. The classifiers commonly used in HALCON include GMM (Gaussian mixture Model), Netural Nets(Neural network), SVM (Support Vector Machine), etc. In this study, multi-layer perceptron (MLP) is used to create an MLP classifier with manually selected

features by adding feature vectors, and then the classification file of the trainer is read to recognize and classify the selected characters.

Multi-layer perceptron (MLP) is also known as deep neural network. The connection between layers is shown in Fig. 13 as a fully connected neural network, and each neuron represents a kind of excitation function as shown in Fig. 14 (the excitation function is composed of linear function and activation function).

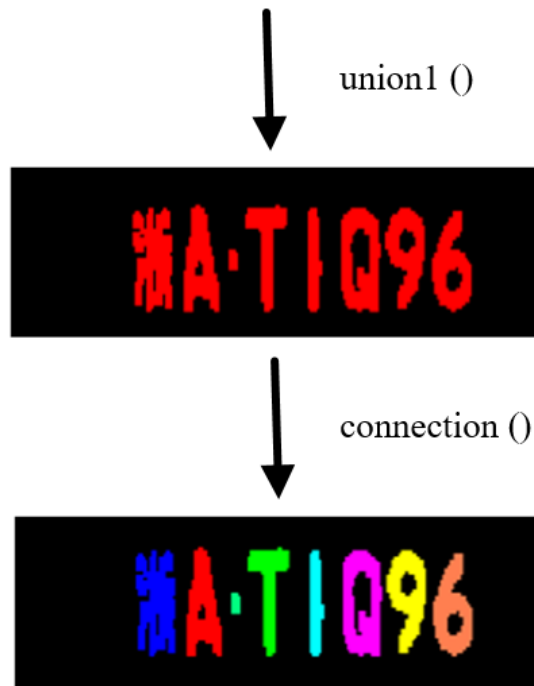


Fig. 12. The result of character segmentation

Input layer      Hidden layer      Output layer

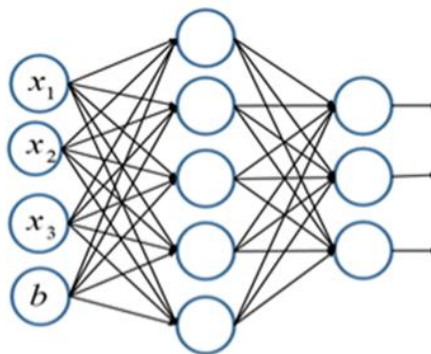


Fig. 13. multilayer perceptron

The deviation between the output  $y$  of the neural network and the true value  $y$  is denoted as:

$$Loss = \sum_{i=1}^n (Y_i - (w_i + b_i))^2$$

The whole training process is the process of shrinking Loss. By backpropagating the residual, the gradient descent method is used to continuously update the weights and biases so that the output of the network approximates the true weights.

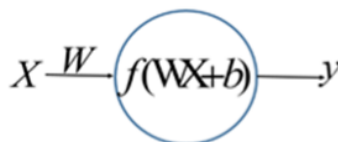


Fig. 14. neuron model





**Fig. 15. License plate recognition result**

The steps on the HALCON platform are as follows: The first step is to sort the segmentation characters in HALCON and count the number of connected domains (characters) by `count_obj()` operator. Then the `append_ocr_trainf()` operator is called to write the feature vectors of a single character region, a single character image, and the corresponding character text into the TRF TrainFile file. Then the `create_OCR_class_MLP()` operator is used to create an OCR classifier using multi-layer perceptrons. According to the character sequence saved in the TrainFile file, the character picture is saved as the OCR classifier in OMC format, and the classifier assigns class labels to the data points for identification and use to complete the creation of the classifier. In the second step, the `trainf_ocr_class_MLP()` operator is used to train the newly created OCR classifier, and then the `write_ocr_class_MLP()` operator is used to write the OCR classifier into a file for saving. Finally, the trained OCR classifier is invoked to recognize and display the characters. The result is shown in Fig. 15.

#### **4. CONCLUSION**

The built-in classifier of HALCON cannot recognize Chinese characters, so this study trained its own OCR classifier according to the needs. In the process of Chinese character recognition, expansion processing was used to

process the corrected Chinese characters into independent connected domains in view of the 'character disconnect' of Chinese characters. In this paper, a clear image of license plate is obtained by preprocessing the image, and then an independent character region is obtained by expanding and segmenting the characters. The image is positioned and rotated, and the characters are recognized by OCR character recognition. After testing, the license plate recognition system designed in this study is simple and effective, and has a certain sense of use value. In this paper, character recognition in the field of machine vision is studied. Through the recognition of Chinese characters to expand the scope of machine vision recognition, the development of machine vision has a certain role in promoting.

#### **COMPETING INTERESTS**

Author has declared that no competing interests exist.

#### **REFERENCES**

1. H P, J S, D M, Rana O, C P. Automated License Plate Recognition for Resource-Constrained Environments. *Sensors*. 2022; 22(4):1434-1434. DOI: 10.3390/S22041434

2. Huang B, Liu J, Chen M, Fan Q. Recognition of Blurring Alphabet Character on Timing Pulley Drawing Based on Halcon Image Processing Technology. *Journal of Physics: Conference Series*. 2021;2074(1). DOI: 10.1088/1742-6596/2074/1/012015
3. Yin H, Zhang H, Li Z, Liu Z. Improving the Transferability of Adversarial Examples with Image Affine Transformation. *Journal of Physics: Conference Series*. 2021; 1955(1). DOI: 10.1088/1742-6596/1955/1/012052
4. Pu B. Research on Chinese License Plate Recognition Algorithm Based on Convolution Neural Network. *Journal of Physics: Conference Series*. 2021;1802(3): 032355. DOI: 10.1088/1742-6596/1802/3/032055
5. Wu H, Zhou B, Wei W. License Plate recognition in fog weather based on deep learning. *Journal of Physics: Conference Series*. 2021;1738(1):012104. DOI: 10.1088/1742-6596/1738/1/012104
6. Cai L, Ye Y, Gao X, Li Z, Zhang C. An improved visual SLAM based on affine transformation for ORB feature extraction. *Optik*. 2021;227. DOI: 10.1016/j.jileo.2020.165421
7. Adélaïde K, F C, Ramakrishnan B, Hilaire F, Rajagopal K. A Simple Image Encryption Based on Binary Image Affine Transformation and Zigzag Process. *Complexity*. 2022;2022. DOI: 10.1155/2022/3865820
8. Wang H, Li Y, Dang L, Moon H. Robust Korean License Plate Recognition Based on Deep Neural Networks. *Sensors*. 2021;21(12):4140-4140. DOI: 10.3390/S21124140
9. Liu F. A Dual-Watermarking Scheme Robust to Affine Transformation. *Journal of Physics: Conference Series*. 2021; 1856(1). DOI: 10.1088/1742-6596/1856/1/012062
10. Z W, Gao T, Feng J. Research on Pre-Processing Methods for License Plate Recognition. *International Journal of Computer Vision and Image Processing (IJCVIP)*. 2021;11(1): 47-79. DOI: 10.4018/IJCVIP.2021010104
11. T V, Sachi N, MS, Irina VP, Denis AP, KS. Automatic Vehicle License Plate Recognition Using Optimal Deep Learning Model. *Computers, Materials & Continua*. 2021;67(2):1881-1897. DOI: 10.32604/CMC.2021.014924
12. Karthick K, Premkumar M, Manikandan R, Cristin R. Survey of Image Processing Based Applications in AMR. *Review of Computer Engineering Research*. 2018; 5(1):12-19. DOI:10.18488/journal.76.2018.51.12.19
13. Karthick K, Chitra S. Novel Method for Energy Consumption Billing Using Optical Character Recognition. *Energy Engineering: Journal of Association of Energy Engineers*.2017;114(3):64-76. Available:https://doi.org/10.1080/01998595.2017.11863765
14. R G, I D. Optical Character Recognition using Deep Neural Network. *International Journal of Computer Applications*. 2020; 176(41):61-65. DOI: 10.5120/ijca2020920552
15. Hye W, Min J, Ju C, G Y, Mi Y. A Study on the Advancement of Character Recognition Using Image Correction. *The Journal of Image and Cultural Contents*. 2020;20:225-245. DOI: 10.24174/jicc.2020.06.20.225
16. Z D, Song H, Liang H, Wu F, Wang X, Jia J, Fang Y. Traffic parameter estimation and control system based on machine vision. *Journal of Ambient Intelligence and Humanized Computing*. 2020;1-13. DOI: 10.1007/s12652-020-02052-5
17. Karthick K, Chitra S. Review of Optical Character Recognition and Its Applications. *ARPN Journal of Engineering and Applied Sciences*. 2016;11(5):3441-3444.
18. Asghar A. Deep learning-based isolated handwritten Sindhi character recognition. *Indian Journal of Science and Technology*. 2020;13(25): 2565-2574. DOI: 10.17485/ijst/v13i25.914
19. R G, I D. Optical Character Recognition using CRNN. *International Journal of Innovative Technology and Exploring Engineering*. 2020;9(8):61-65. DOI: 10.5120/ijca2020920552
20. Peng Q, Yang S. Research on Visual Inspection System of Waterproof Breathable Membrane Based on HALCON.

- Journal of Physics: Conference Series. 2020;1486(4).  
21. Gao C. A vision calibration method of robot based on halcon. International Journal of Circuits, Systems and Signal Processing. 2020;14:482-491.  
DOI: 10.46300/9106.2020.14.63

© 2022 Wang; This is an Open Access article distributed under the terms of the Creative Commons Attribution License (<http://creativecommons.org/licenses/by/4.0>), which permits unrestricted use, distribution, and reproduction in any medium, provided the original work is properly cited.

*Peer-review history:*

*The peer review history for this paper can be accessed here:  
<https://www.sdiarticle5.com/review-history/91030>*